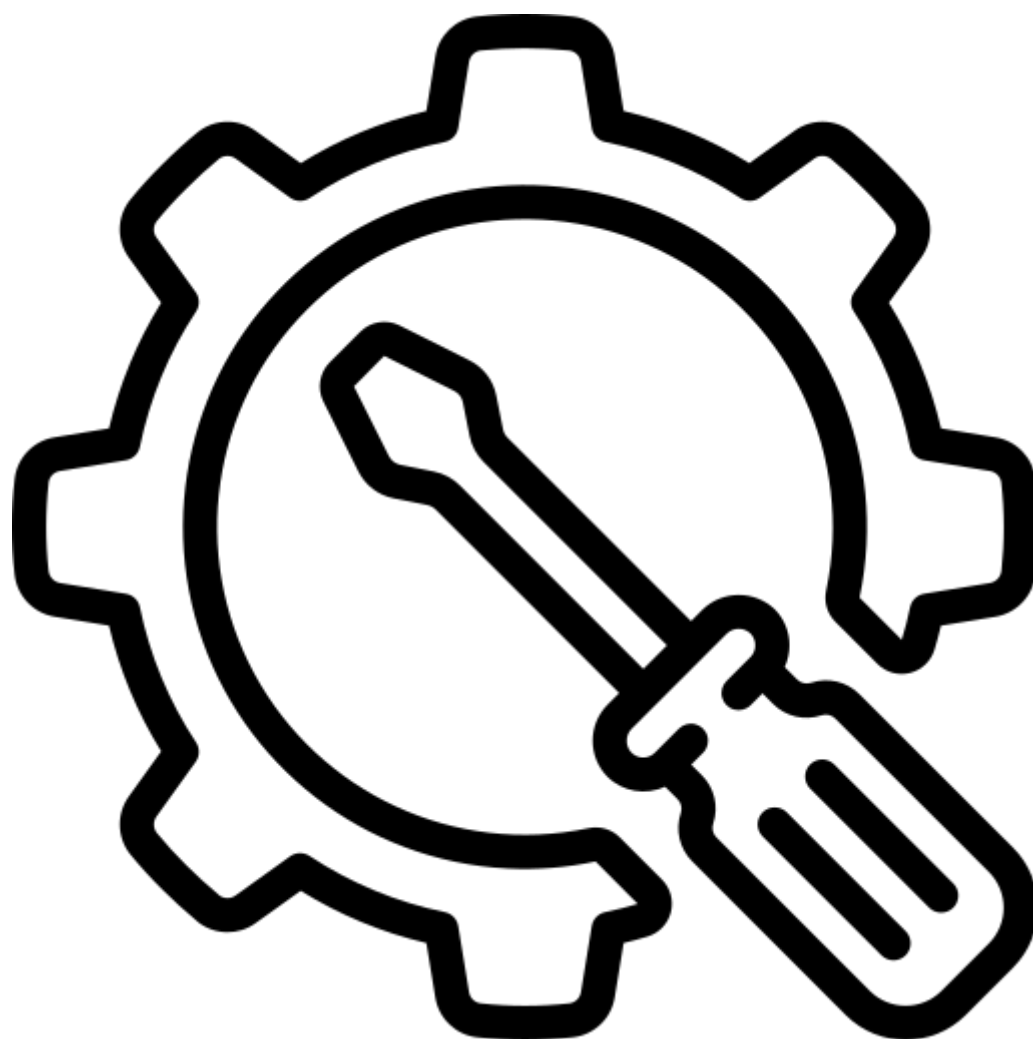


NOTICE GENERALE

Réglages - Montages - Démontages



INFORMATIONS IMPORTANTES

| ATTENTION

- Risque de blessures graves ou mortelles en cas de basculement du meuble.
- TOUJOURS fixer ce meuble au mur à l'aide des fixations anti-basculement.
- Placer les objets lourds dans le tiroir du bas & ne jamais laisser les enfants grimper ou s'accrocher aux tiroirs, portes ou tablettes afin d'éviter les blessures graves ou mortelles dues au basculement.
- Ne pas monter si composants manquants ou cassés ou endommagés.
- Utiliser uniquement l'outillage fourni ou préconisé.
- Ne pas déplacer un mobilier chargé.
- Tenir éloigné des jeunes enfants lors de l'assemblage. Présence de petits composants susceptibles d'être ingérés.
- Il convient que tous les dispositifs d'assemblage soient toujours convenablement serrés et régulièrement vérifiés, et resserrés si nécessaire. Un mauvais montage, calage ou manutention peut entraîner une fragilisation de l'ensemble.
- Adapter la quincaillerie à votre support lors du montage.

| GARANTIE/QUALITÉ

Nos meubles de cuisine bénéficient de la certification NF Ameublement, délivrée par l'Institut technologique FCBA. La liste des produits certifiés est disponible sur le site <https://certification-ameublement.fcba.fr/>

Sont garantis les défauts de qualité et tout vice de fabrication ou de fonctionnement des équipements selon les durées suivantes :

- 5 ans pour les composants de cuisine et salle de bains suivants : meubles, panneaux, plans de travail et plans de toilette,
- 10 ans pour les éléments de quincaillerie,
- 2 ans pour tous les autres accessoires ou produits.

Toute réclamation portant sur un défaut de fabrication ou de finition, est prise en compte si elle est formulée dans les 10 jours suivant la réception de la marchandise. Seules les pièces reconnues défectueuses par nos services font l'objet d'un remplacement gratuit, et cet échange n'occasionne aucun remboursement des frais de main-d'oeuvre.

Ne peuvent être pris en considération :

- les usures anormales provenant d'un mauvais entretien ou d'une pose imparfaite,
- les gonflements des plans de travail ou des meubles, suite à des infiltrations d'eau, des chocs ou un usage inapproprié,
- les gonflements ou gauchissements des portes, suite à une température ou un taux hygrométrique trop important,
- certaines altérations spécifiques, du fait que le bois est un produit naturel. Dans le cas de réassortiment, la teinte et l'aspect identique ne peuvent être garantis.

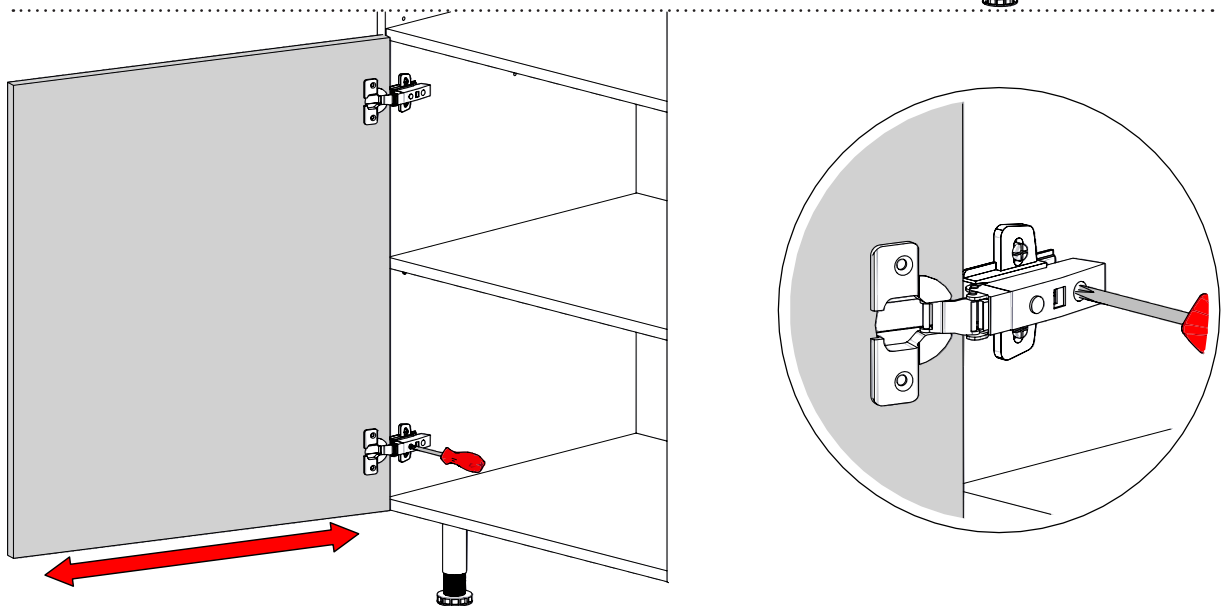
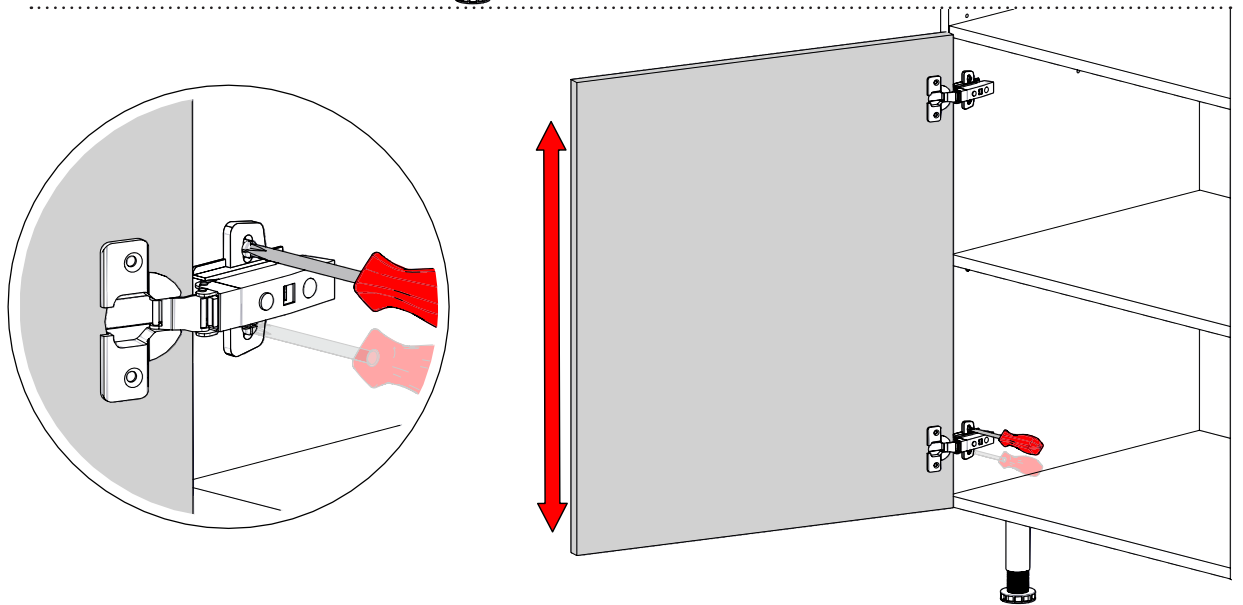
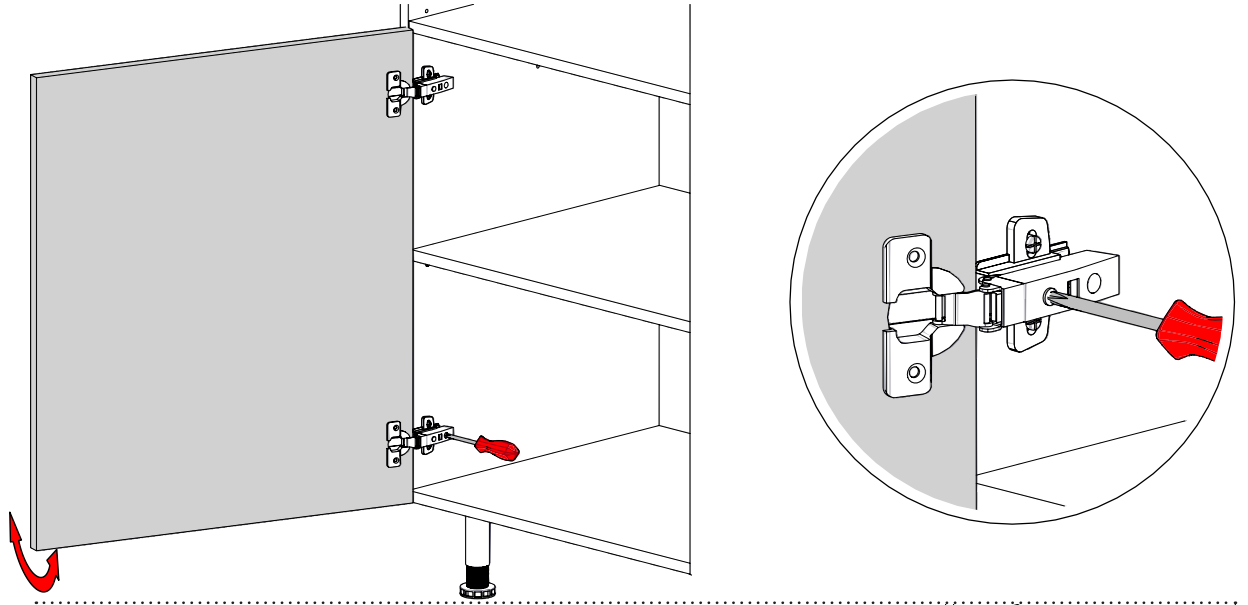
| ENTRETIEN/MAINTENANCE

- Nettoyer la surface du produit à l'eau savonneuse avec un chiffon propre, doux et humide.
- Eviter les produits de nettoyage tels que les poudres abrasives, la laine de verre ou les tampons à récupérer, ainsi que les produits de nettoyage contenant de l'acétone, du chlore ou des solvants.
- Eviter les nettoyeurs à vapeur.
- Enlever immédiatement toutes traces de saleté dès leurs apparitions.
- Vérifier occasionnellement que toutes les fixations, ouvertures, glissières, poignées, supports de fixation, etc... soient bien fixés.

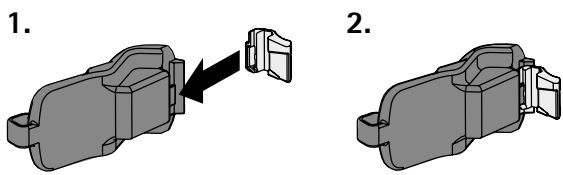
SOMMAIRE

• INFORMATIONS IMPORTANTES.....	2
• CHARNIÈRE 110°	4
• CHARNIÈRE 165°	6
• CHARNIÈRE MEUBLE D'ANGLE.....	7
• TIROIR/CASSEROLIER.....	8
• FAÇADE RELEVABLE COMPAS.....	9
• FAÇADE RELEVABLE HK-S	10
• FAÇADE RELEVABLE HK-TOP.....	12
• FAÇADE RELEVABLE H2PR.....	14
• FAÇADE RELEVABLE LIFT.....	18
• BC70/15 BOUTEILLE-ÉPICES	21
• BC70/PB PAIN-BOUTEILLES	22
• BA70/PRE90 SYSTÈME.....	23
• SUSPENSION HAUTE : TRASER 6.....	25

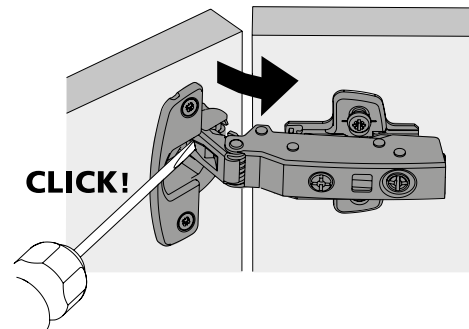
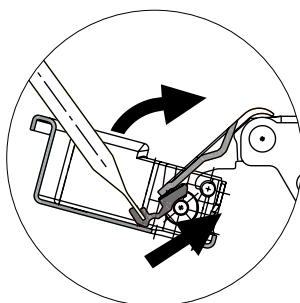
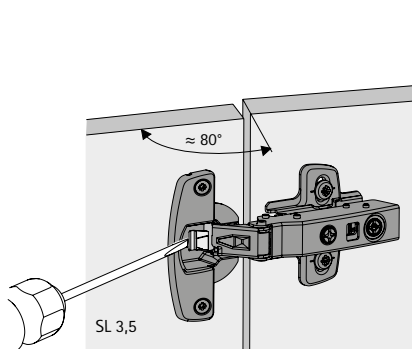
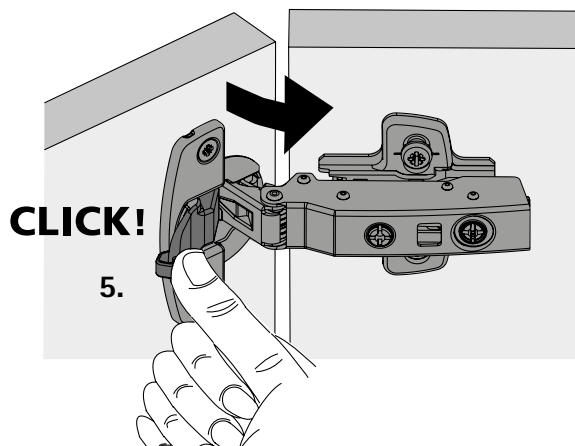
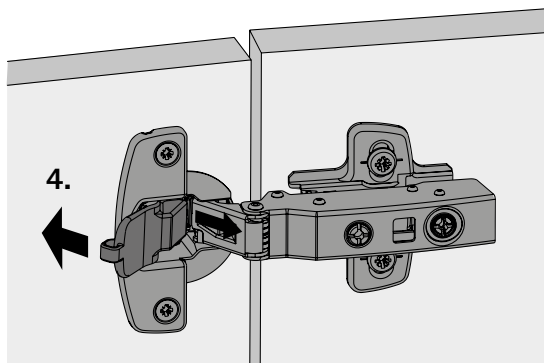
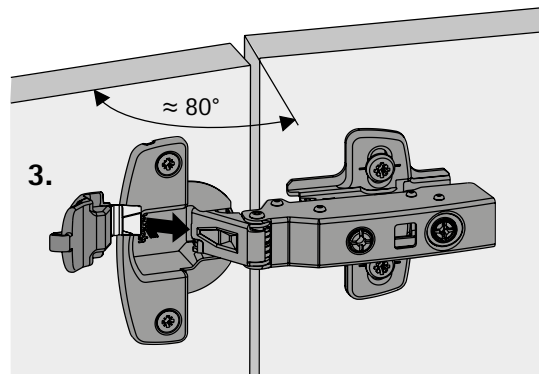
| RÉGLAGES CHARNIÈRE 110°



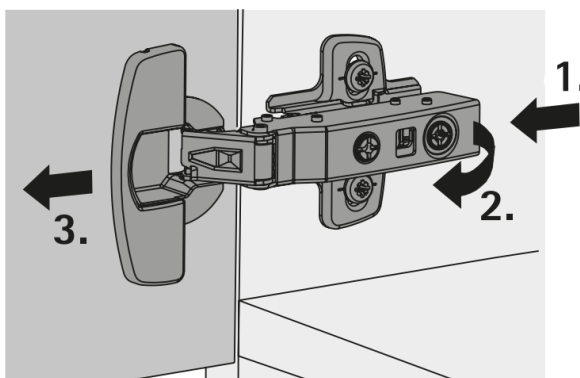
| LIMITEUR D'ANGLE D'OUVERTURE



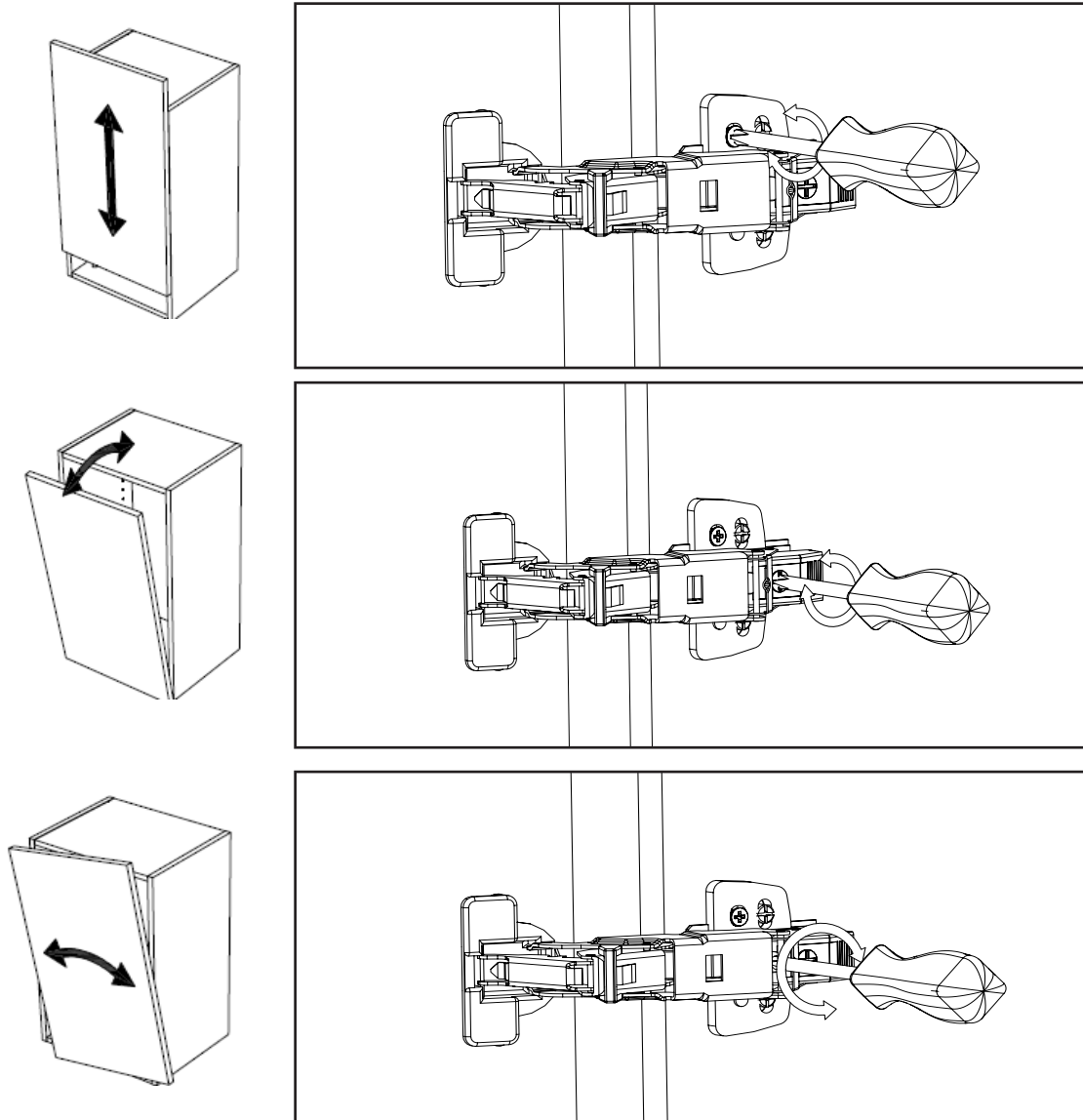
Order no. 9 081 657



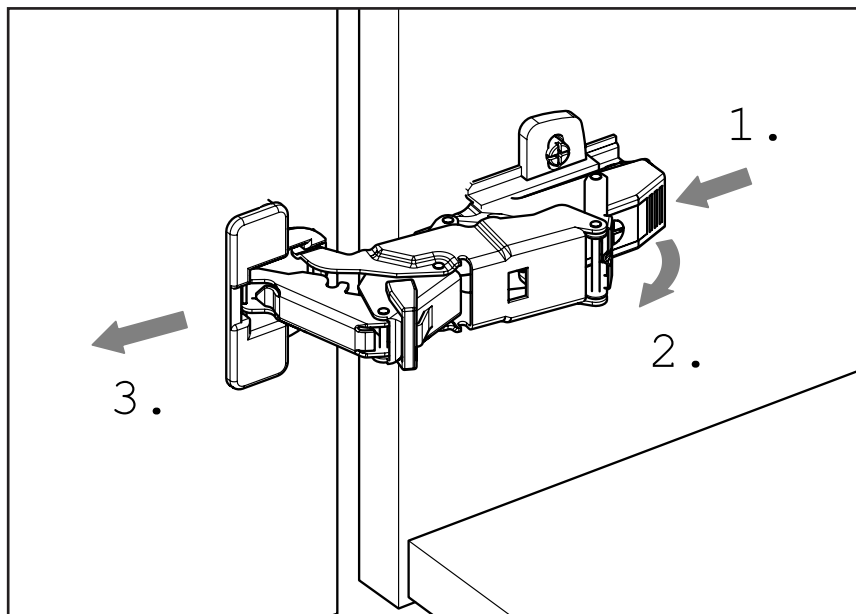
| DÉMONTAGE CHARNIÈRE 110°



| DÉMONTAGE CHARNIÈRE 165°

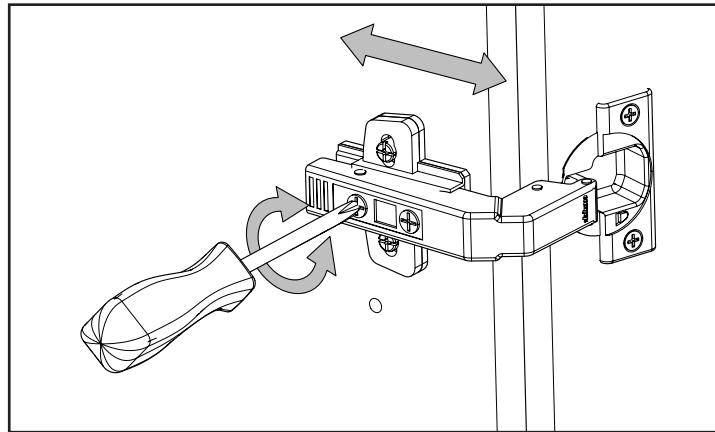
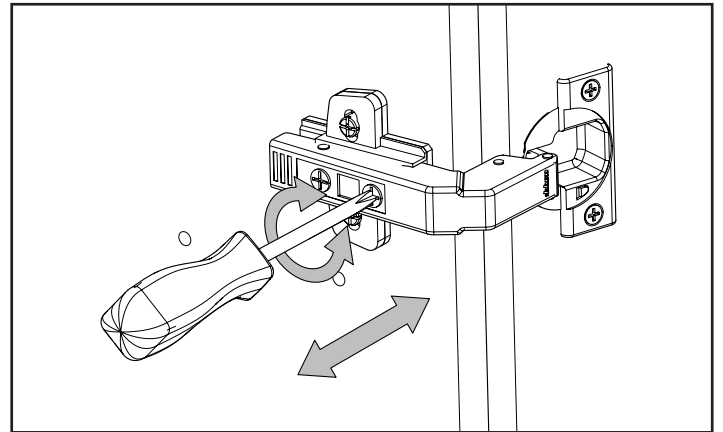
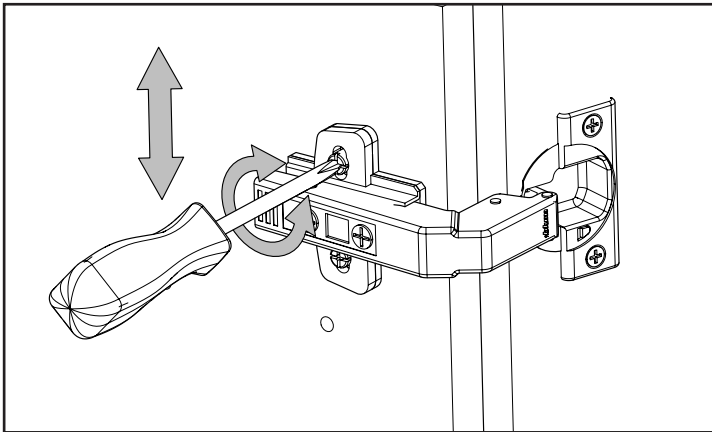


| DÉMONTAGE CHARNIÈRE 165°

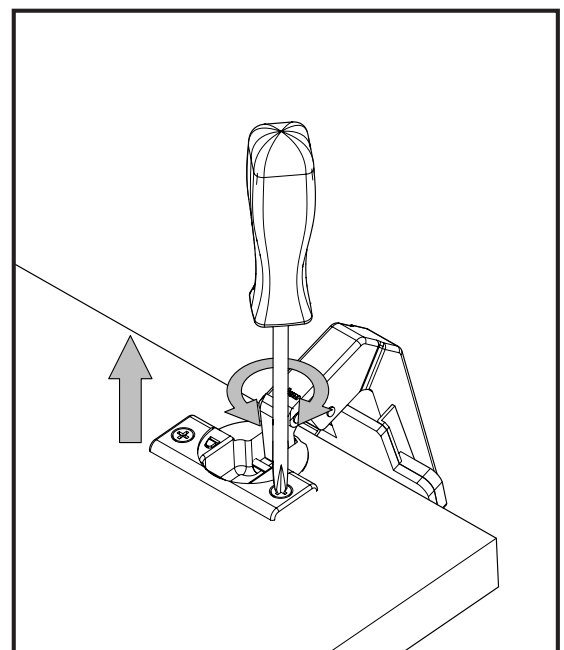
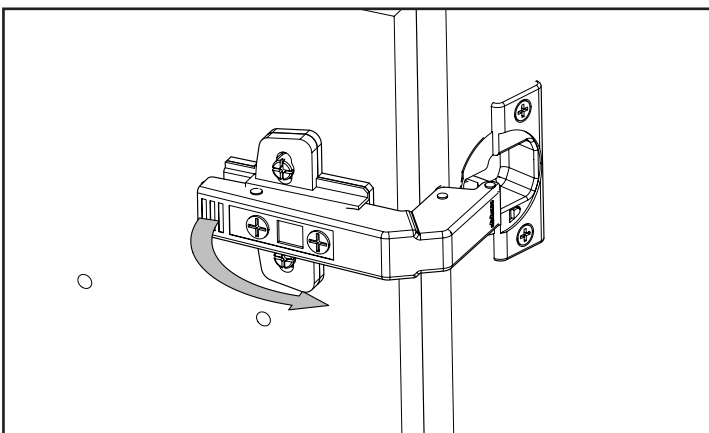


CHARNIÈRE MEUBLE D'ANGLE

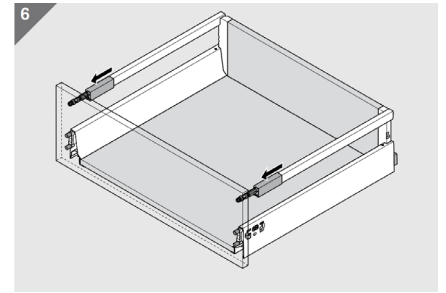
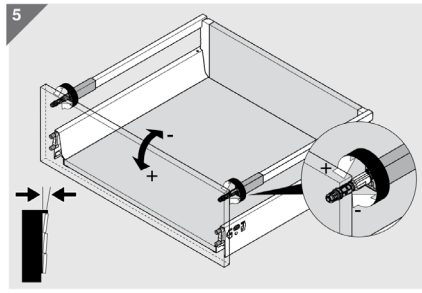
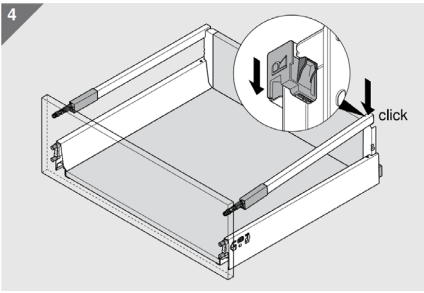
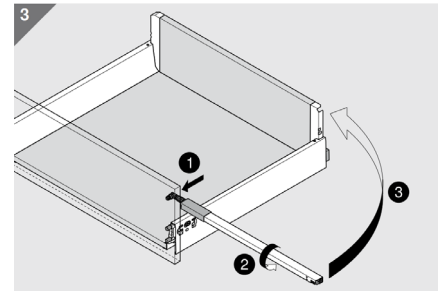
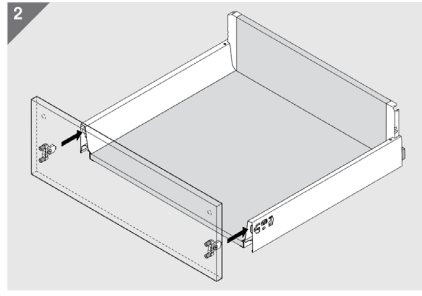
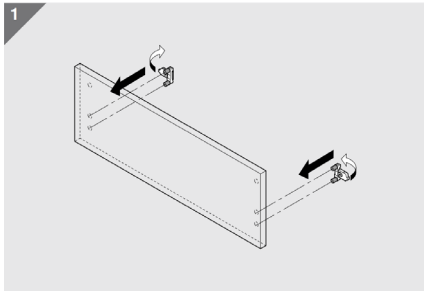
| RÉGLAGES CHARNIÈRE D'ANGLE



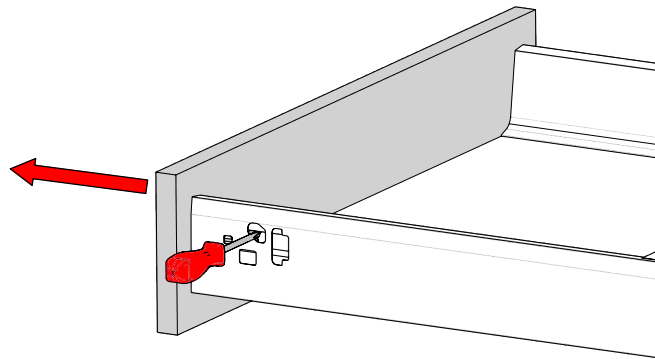
| DÉMONTAGE CHARNIÈRE



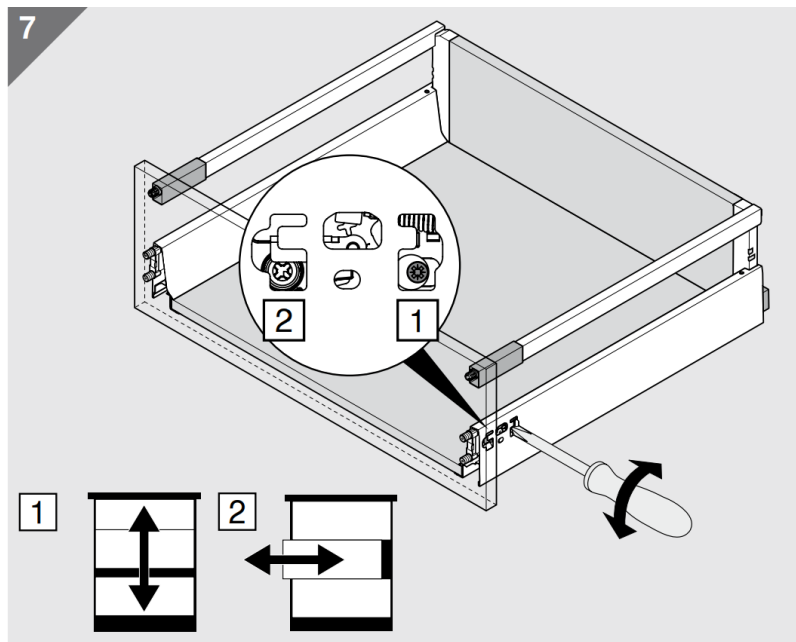
MONTAGE TIROIR/CASSEROLIER



DÉMONTAGE FAÇADE TIROIR

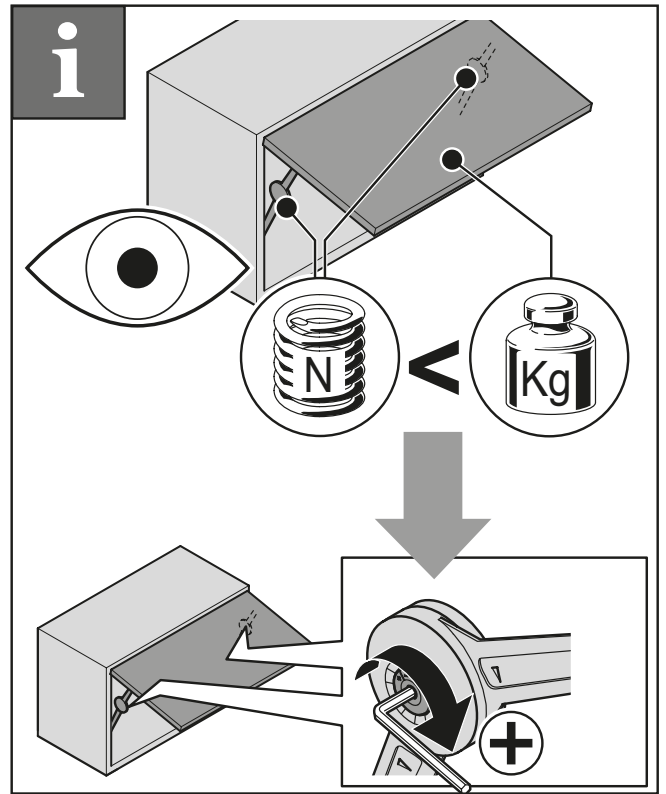
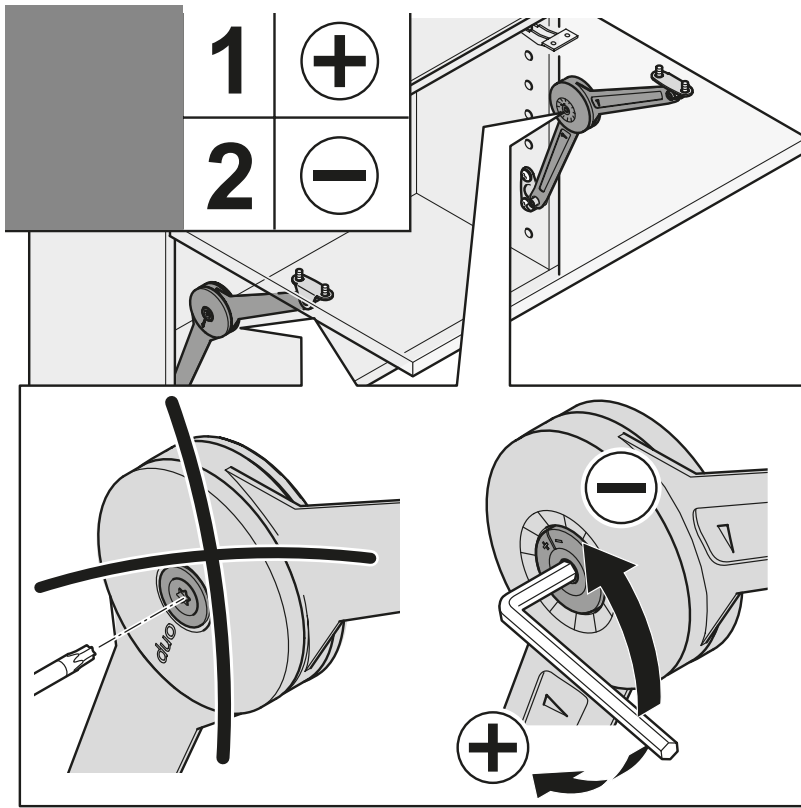


RÉGLAGES FAÇADE TIROIR/CASSEROLIER

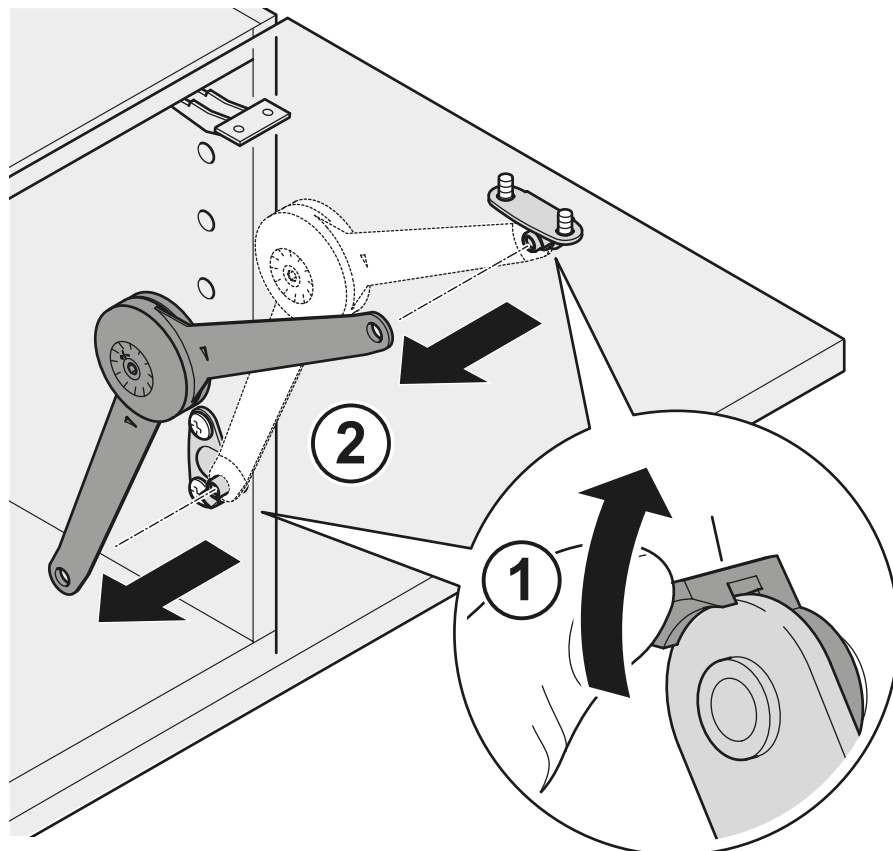


FAÇADE RELEVABLE COMPAS

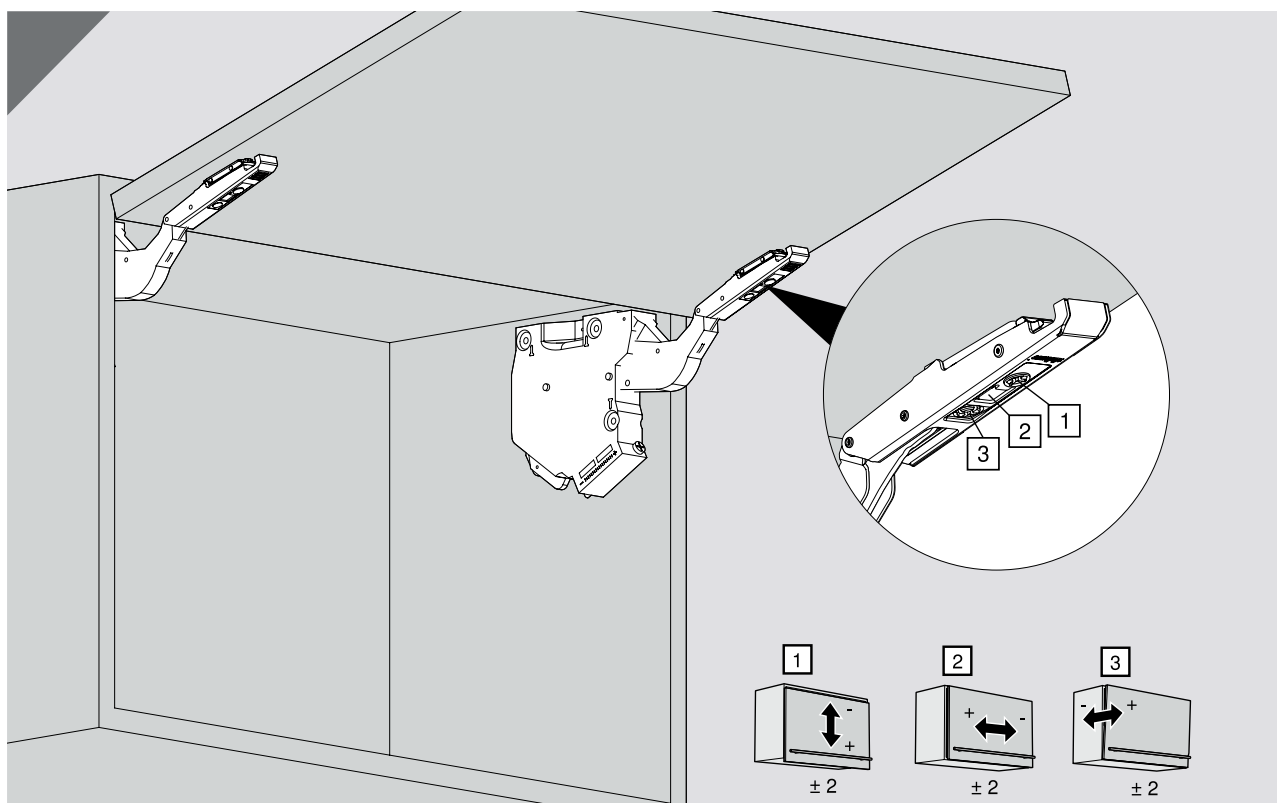
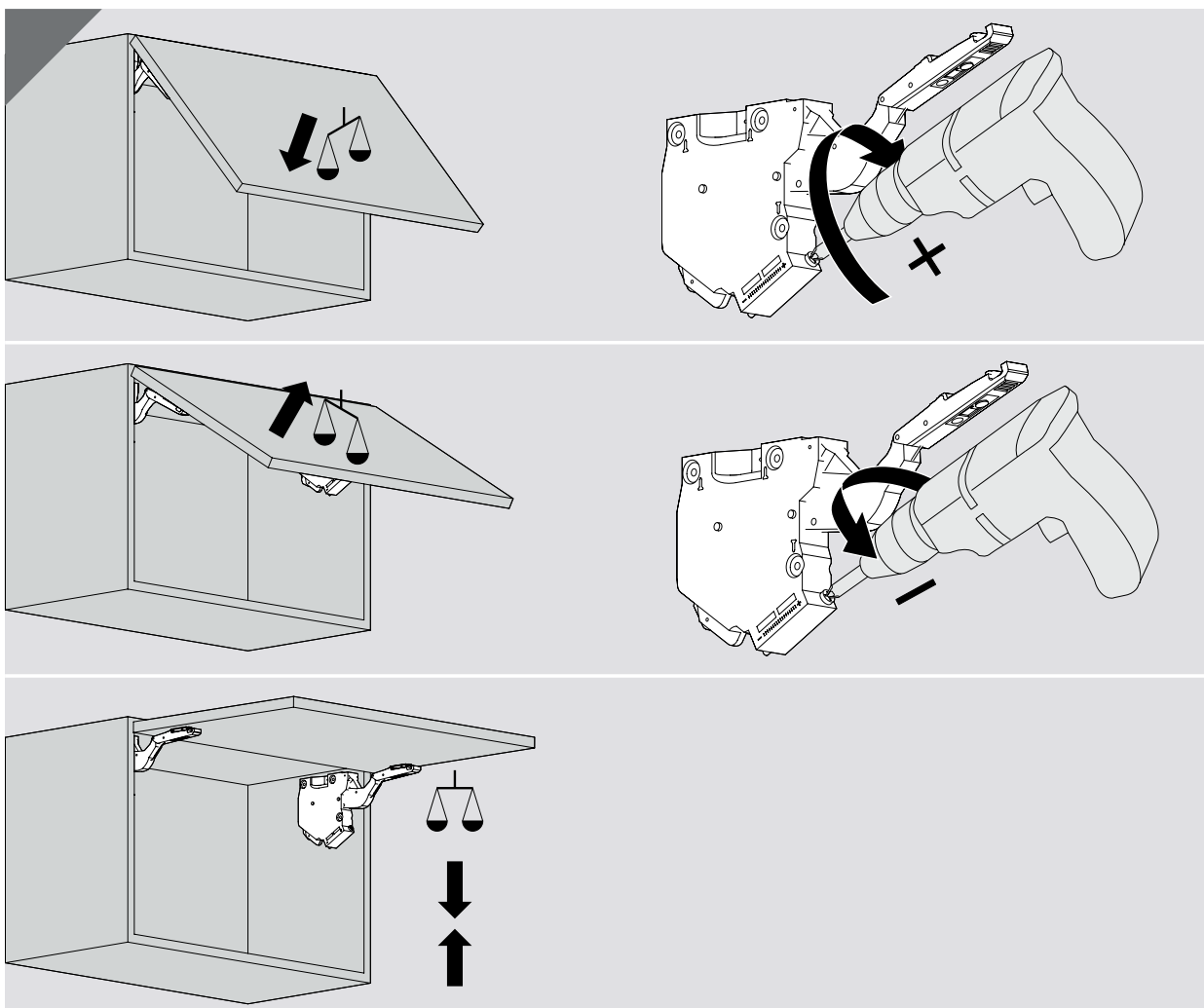
| RÉGLAGE COMPAS



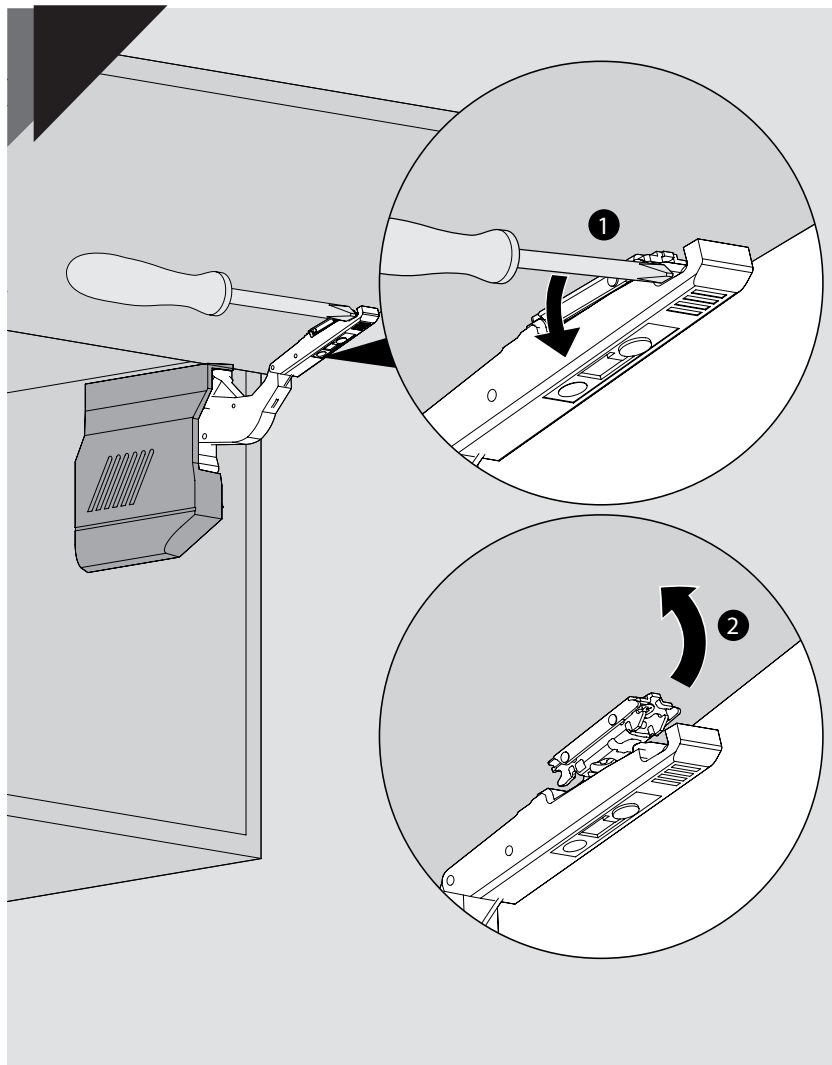
| DÉMONTAGE COMPAS



FAÇADE RELEVABLE HK-S

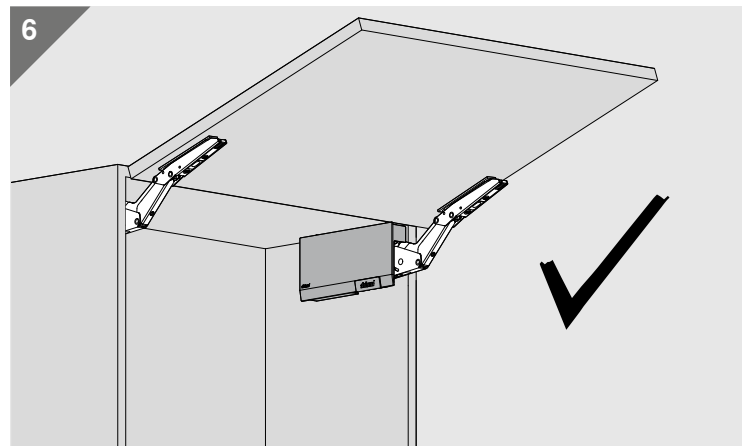
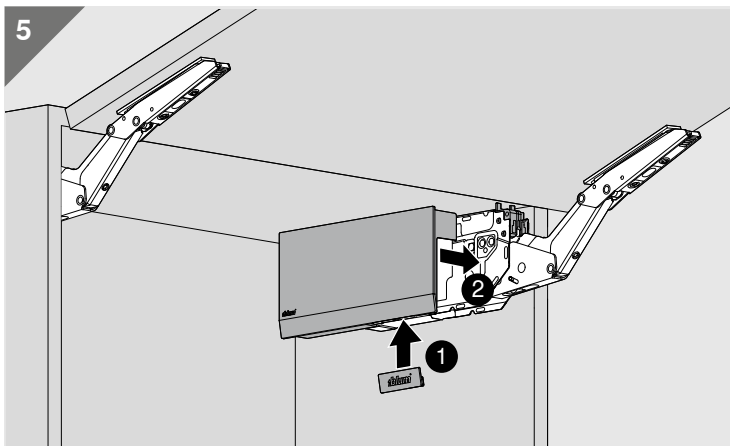
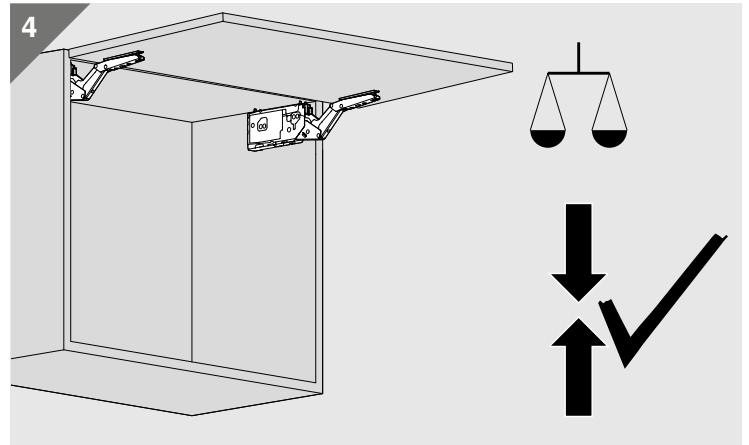
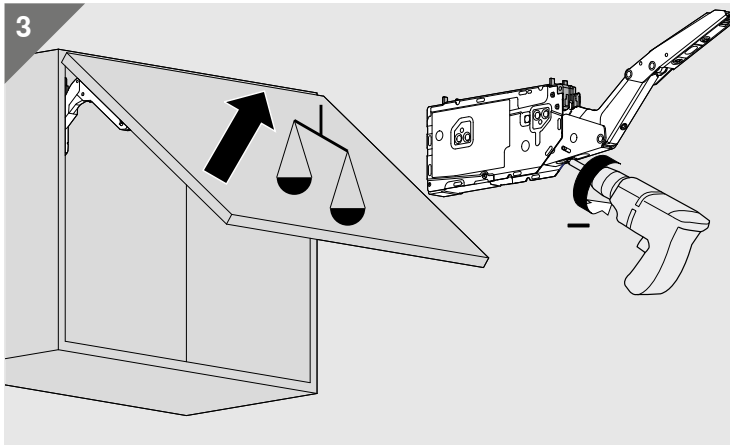
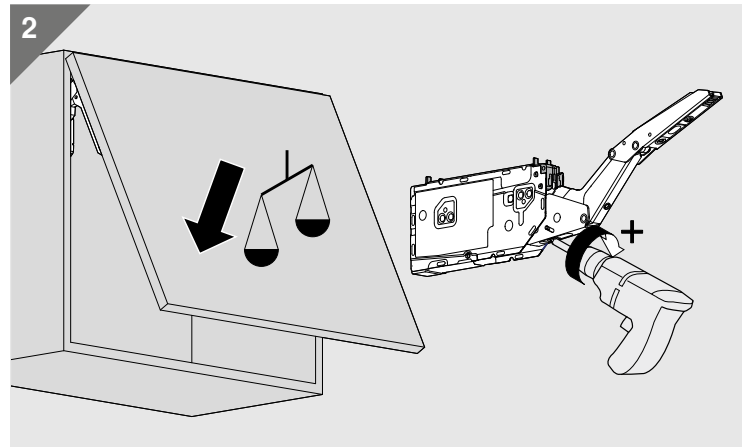
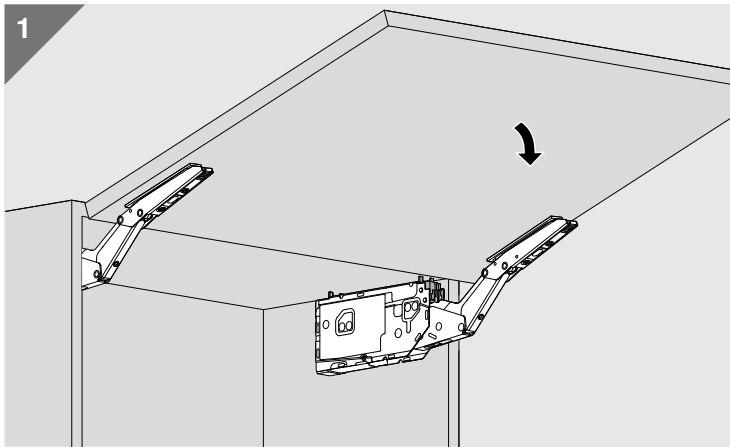
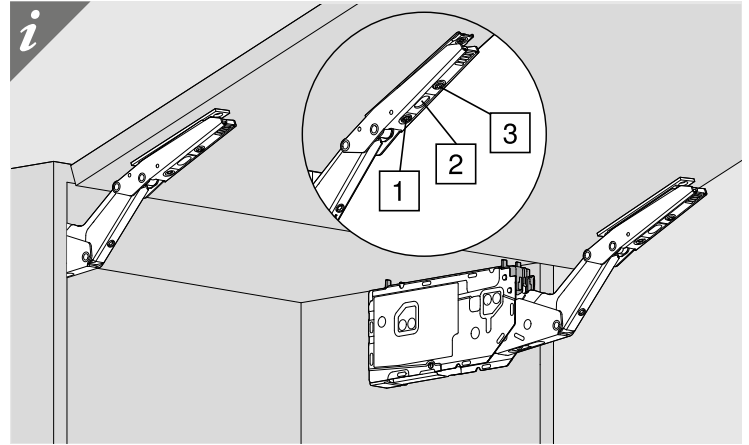
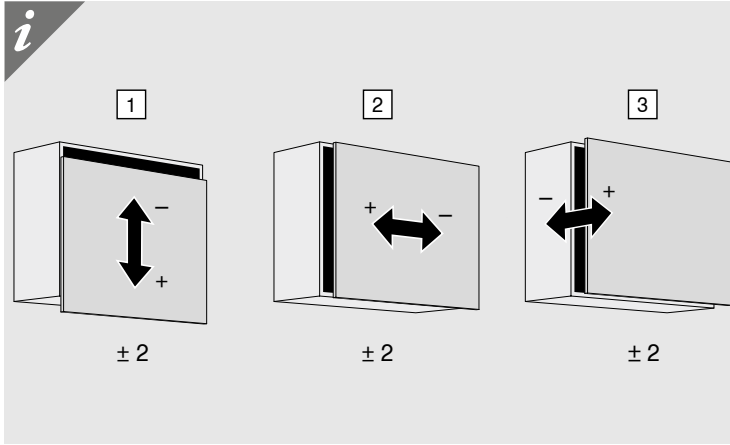


| DÉMONTAGE HK-S

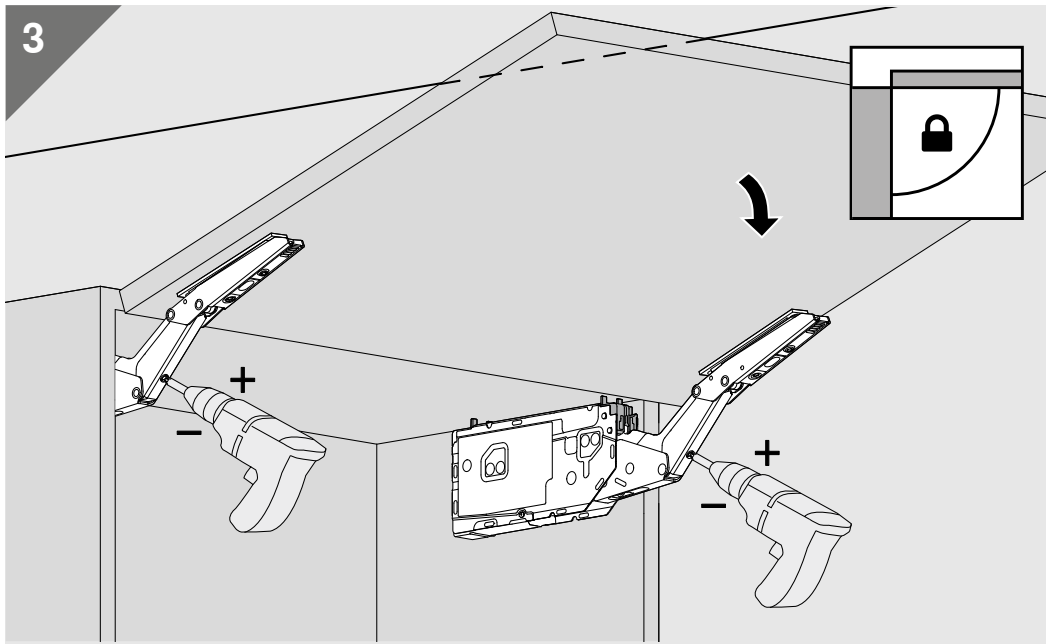


FAÇADE RELEVABLE HK-TOP

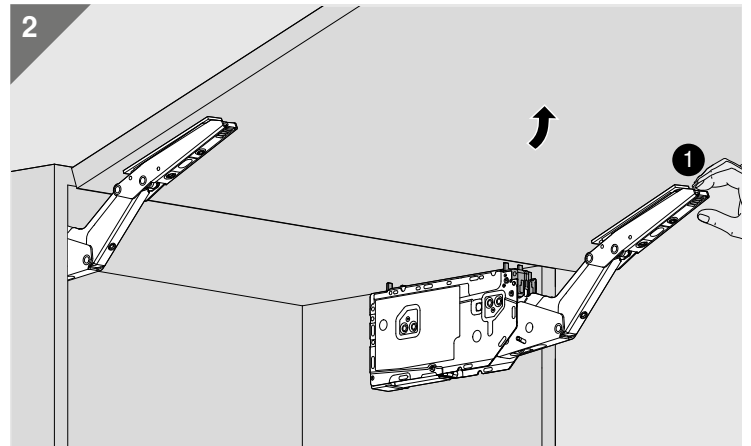
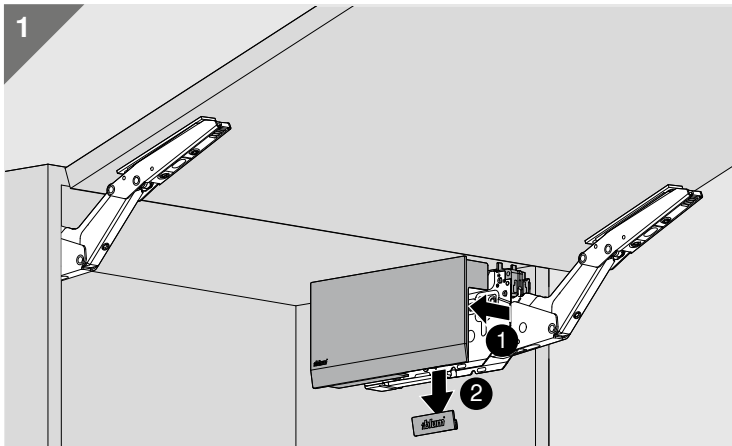
| RÉGLAGES HK-TOP

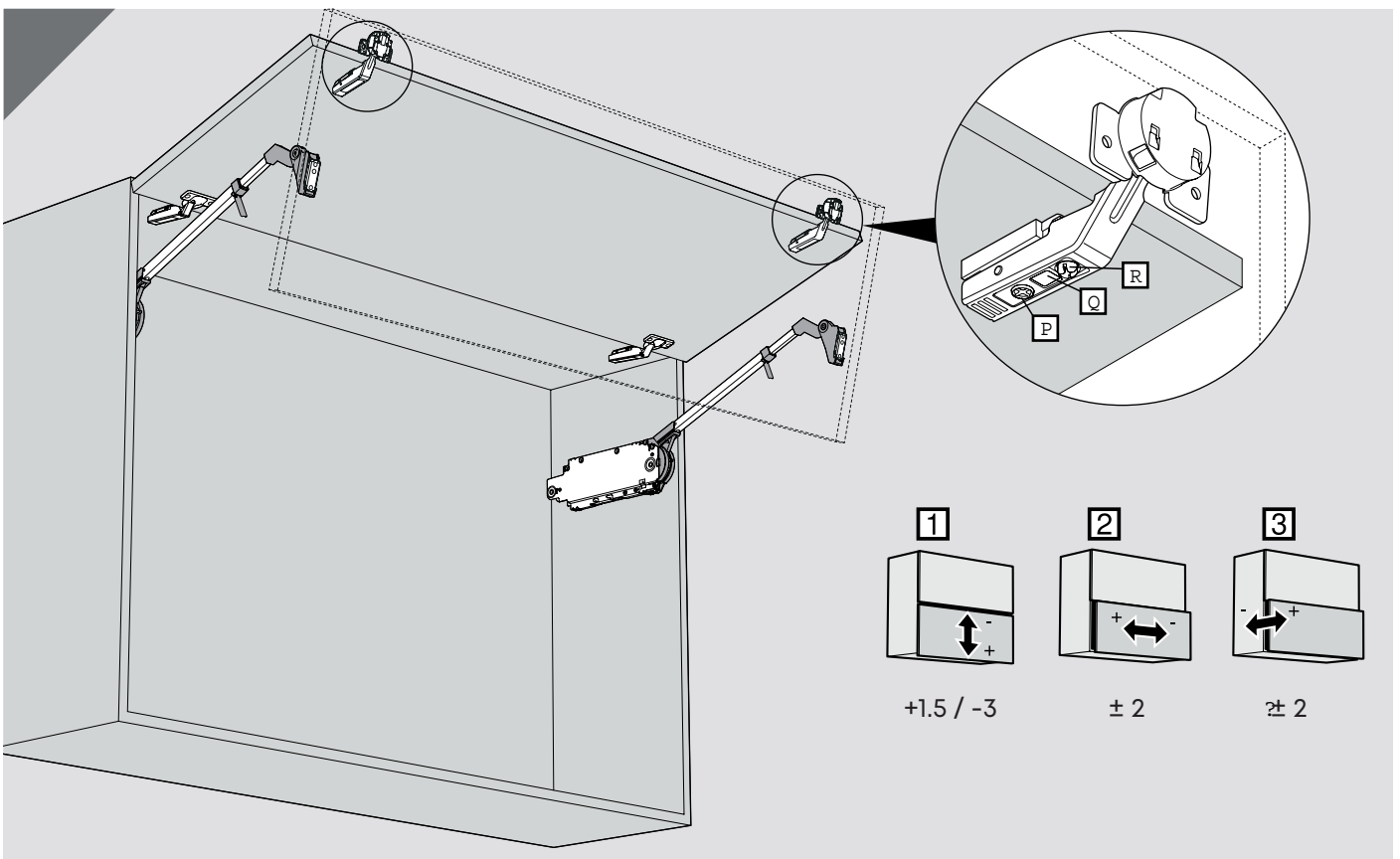
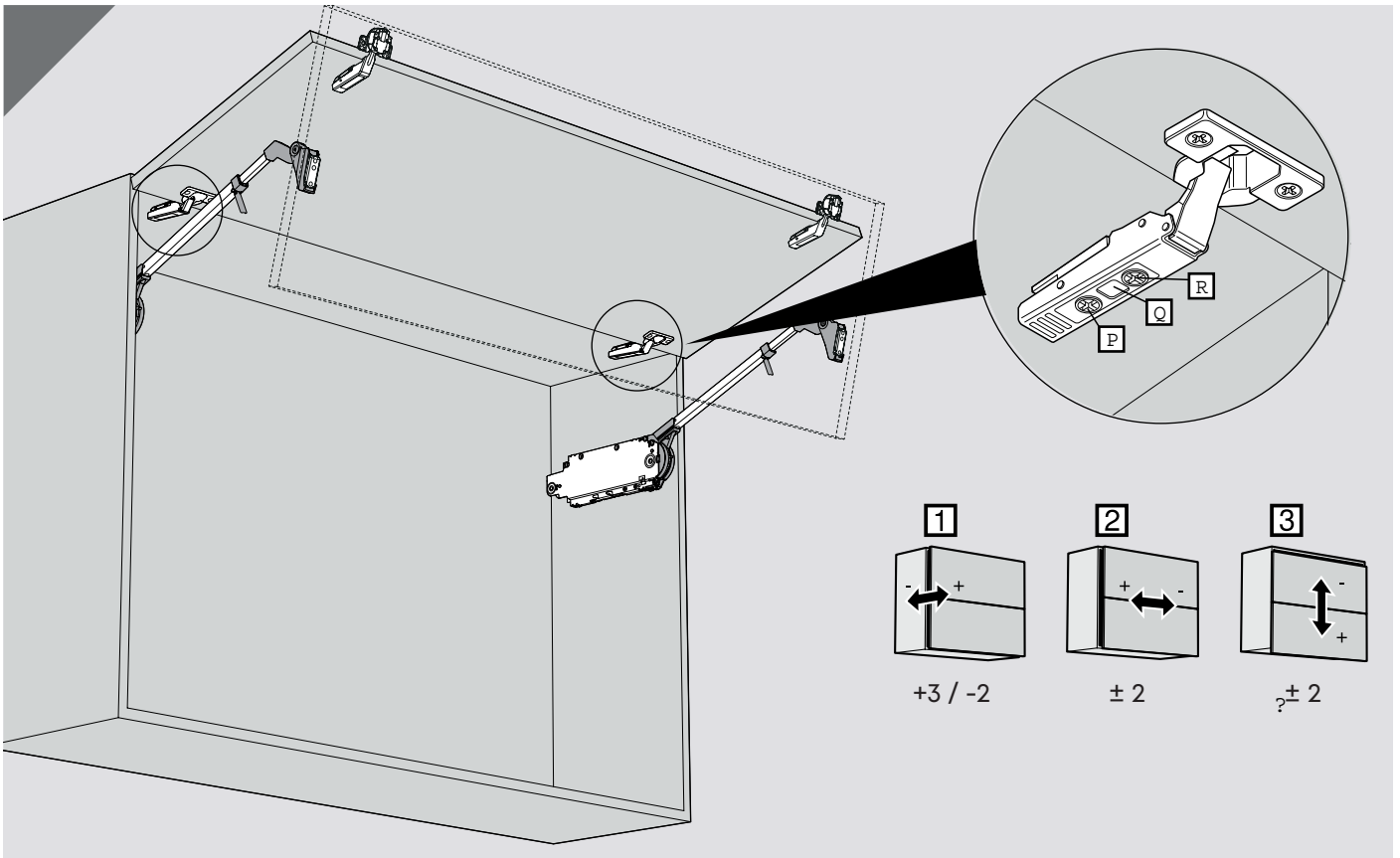


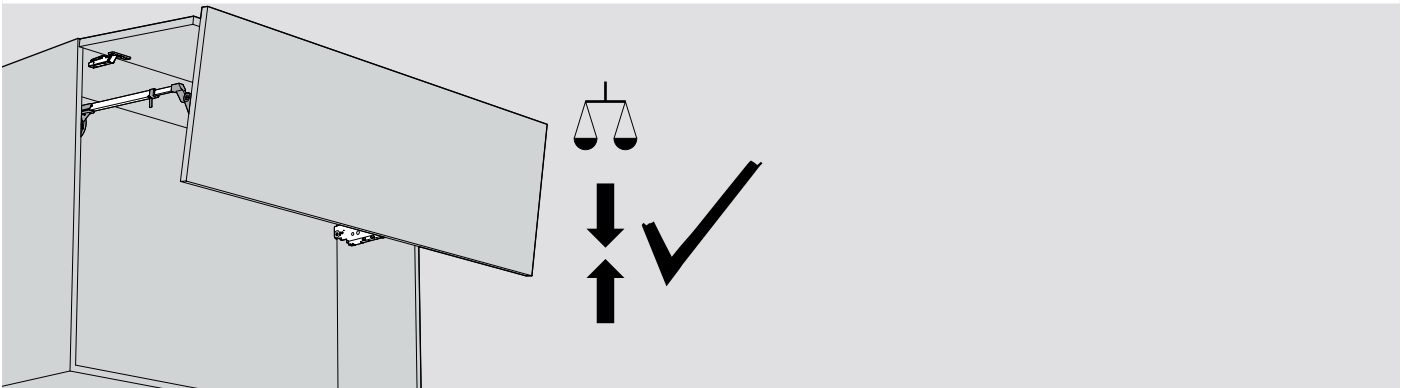
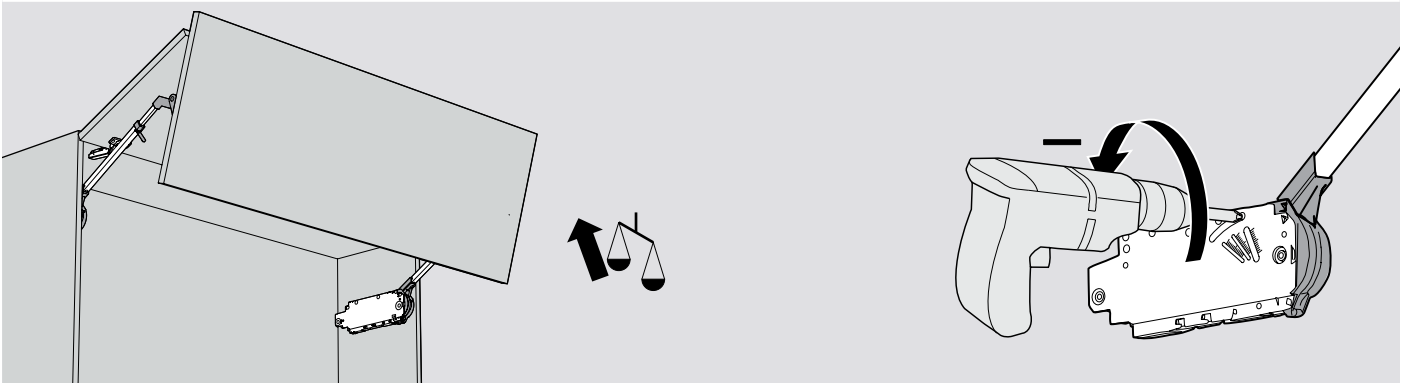
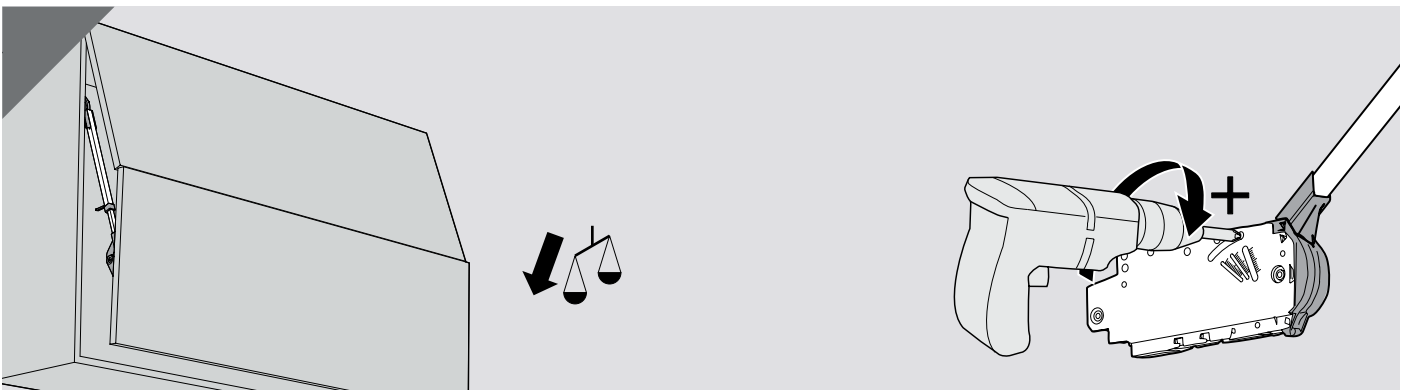
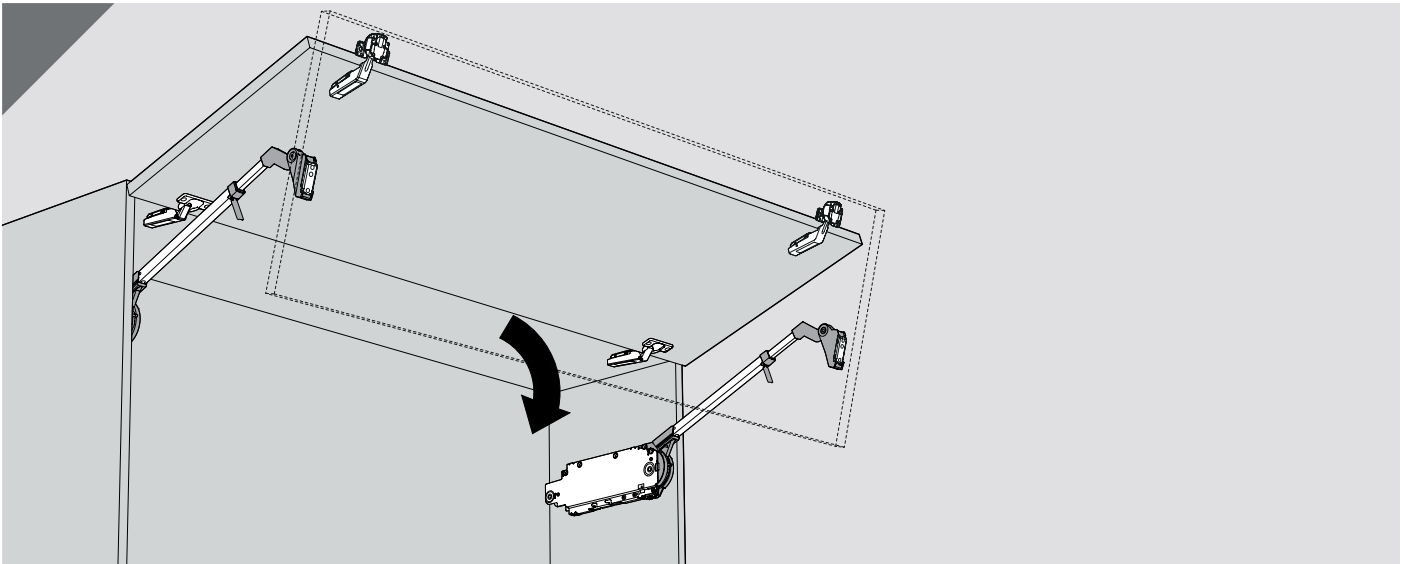
| LIMITEUR OUVERTURE HK-TOP

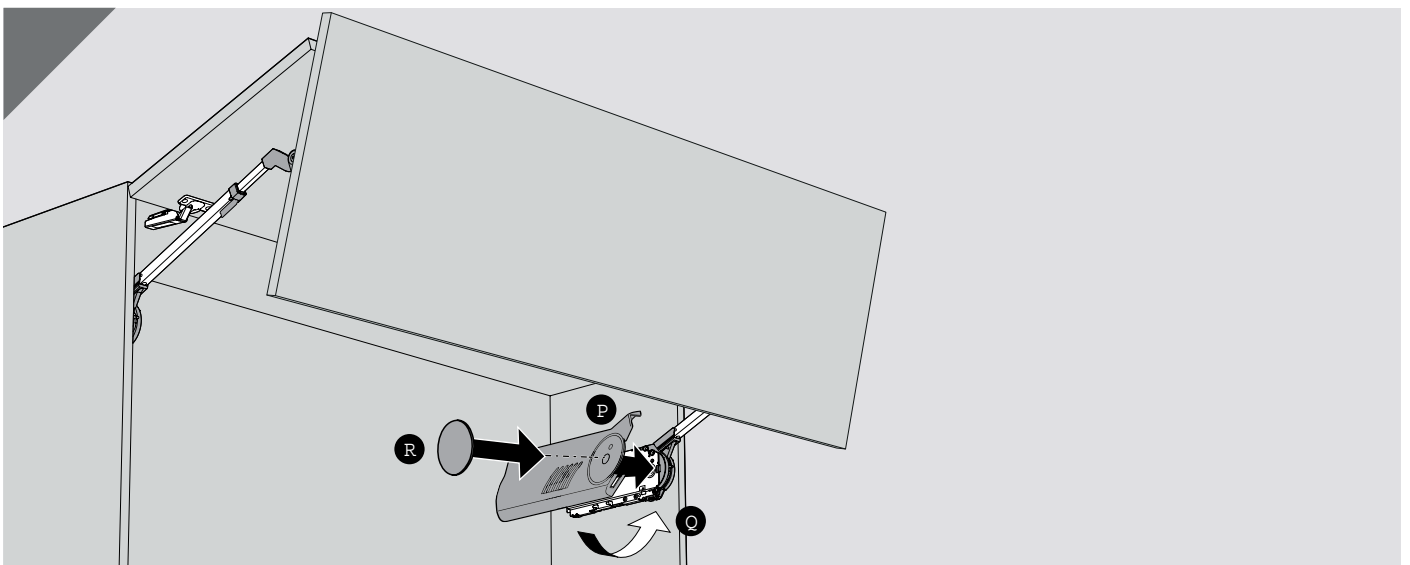
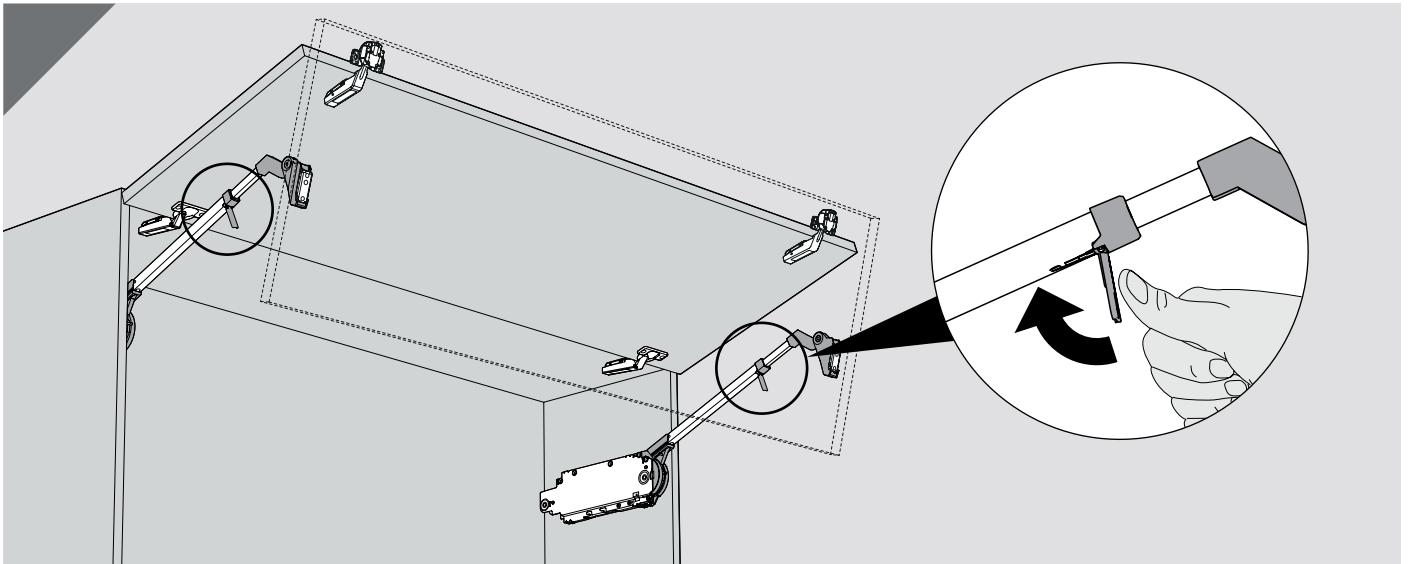
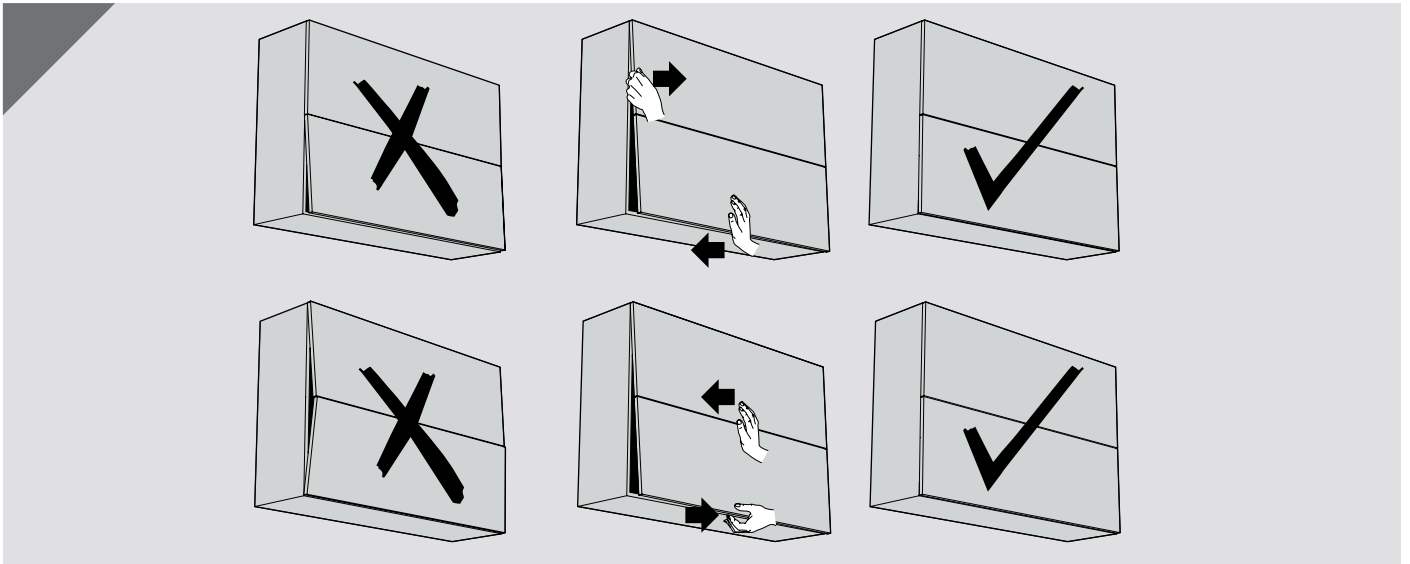


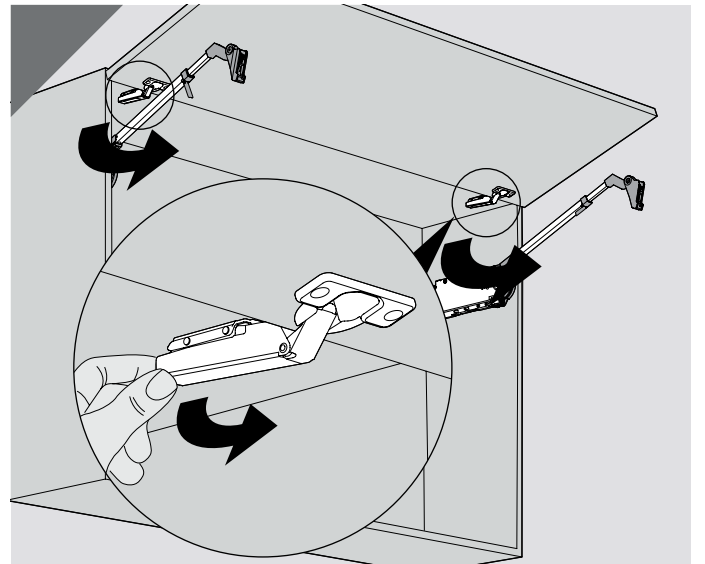
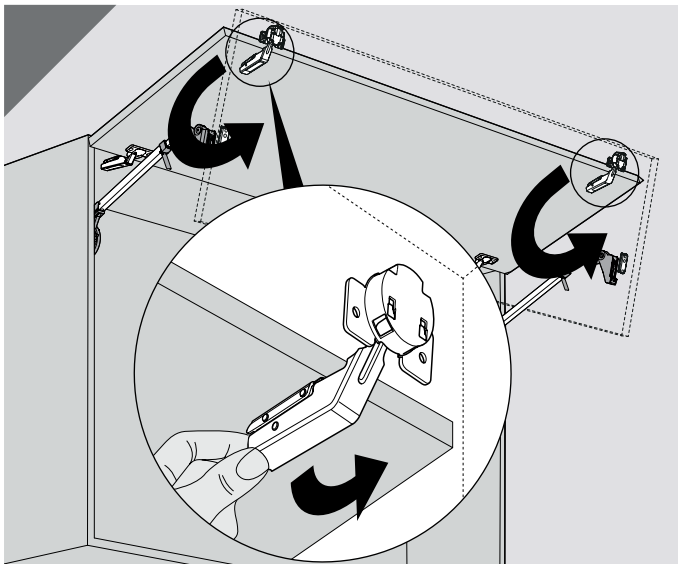
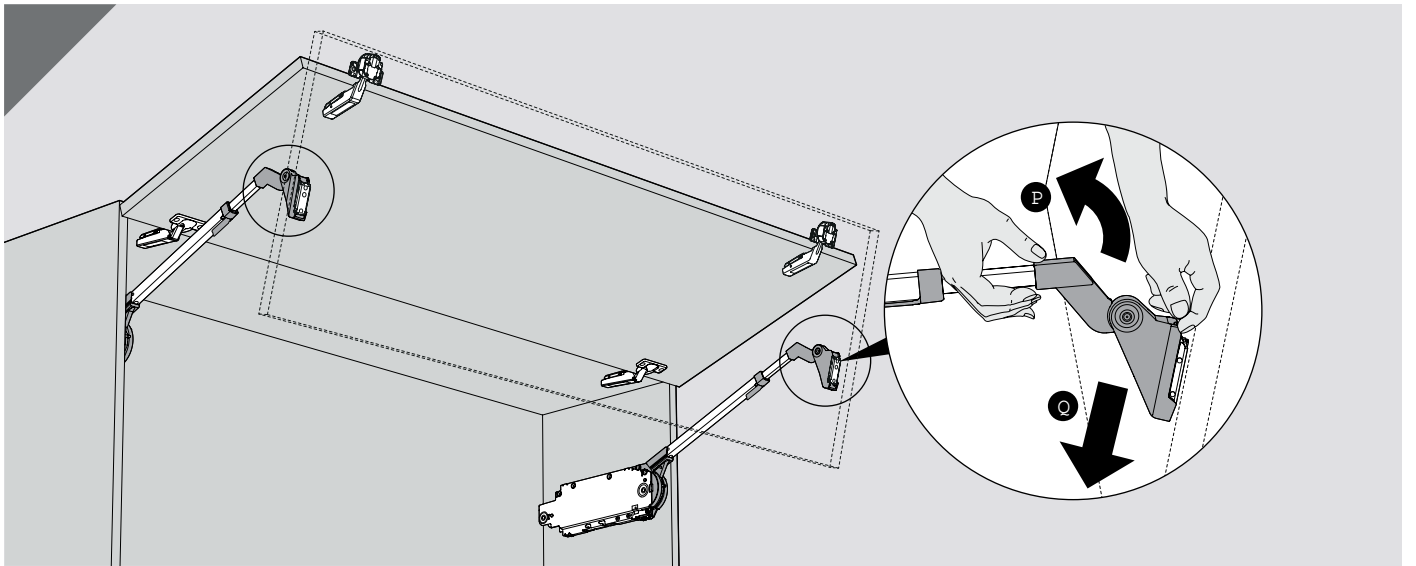
| DÉMONTAGE HK-TOP



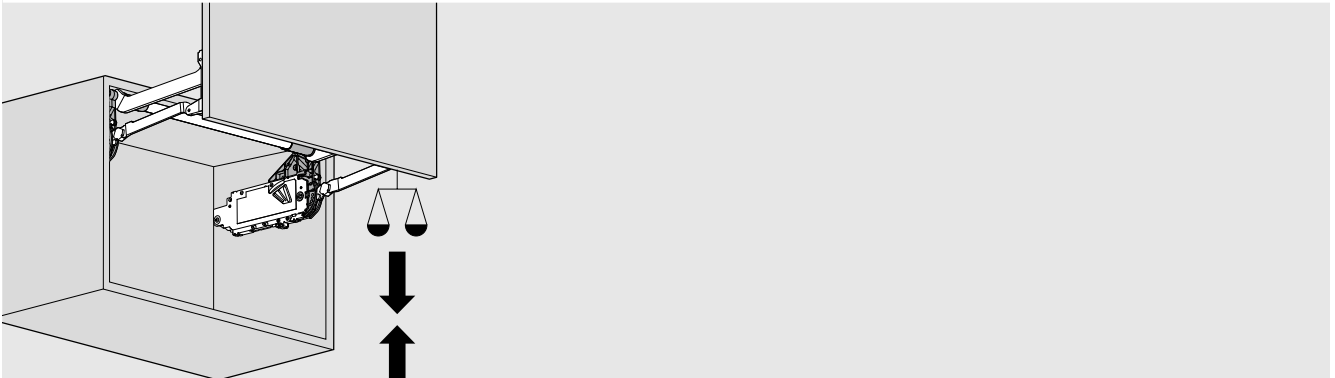
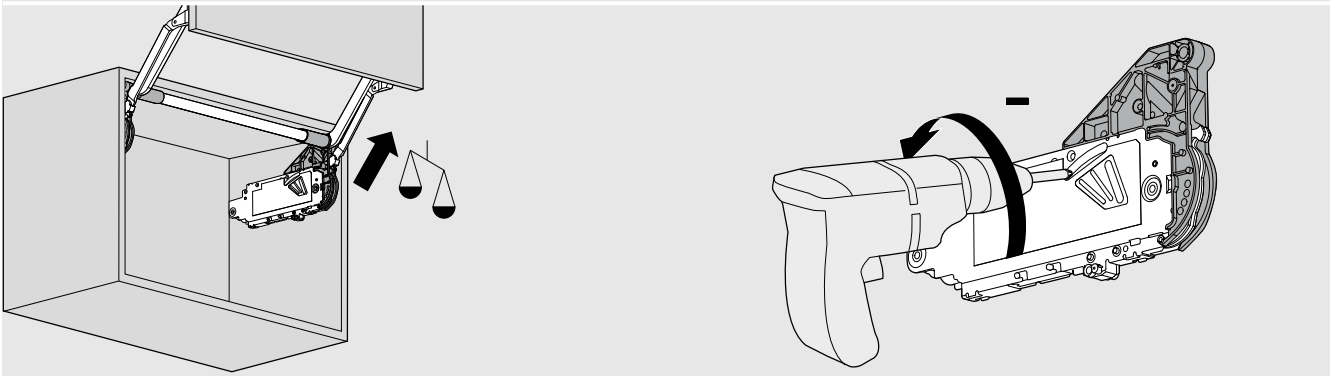
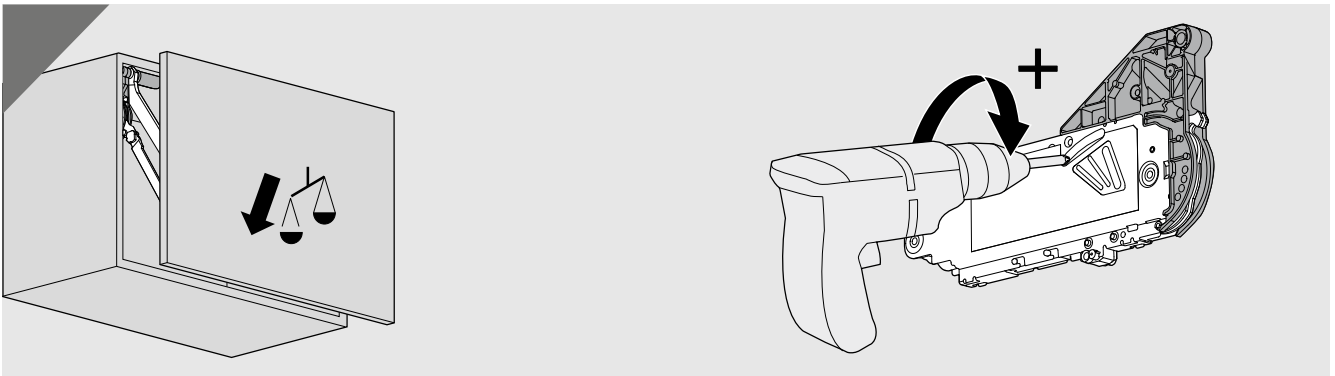
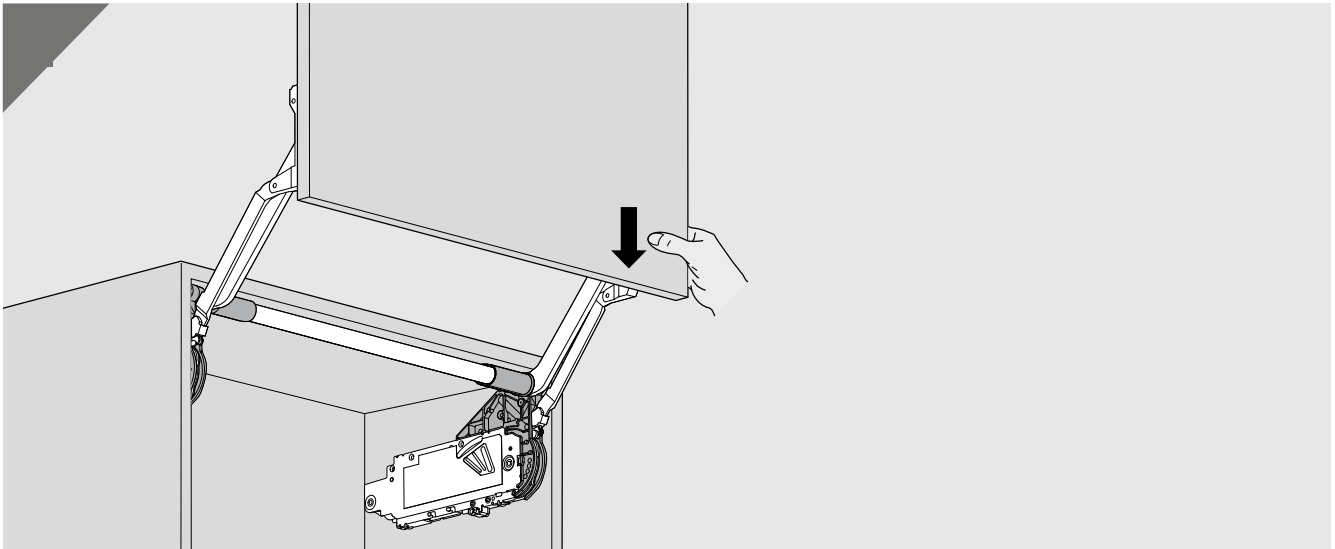


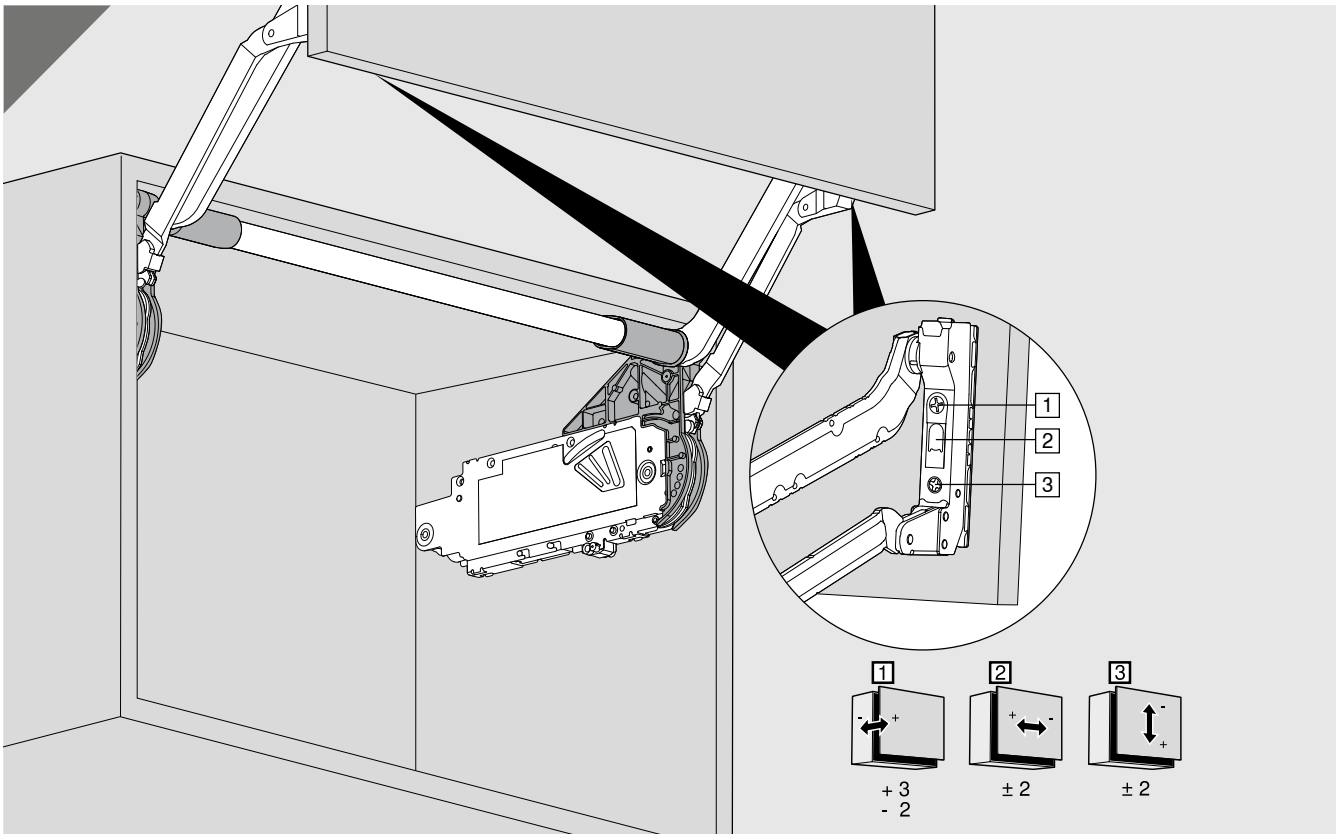




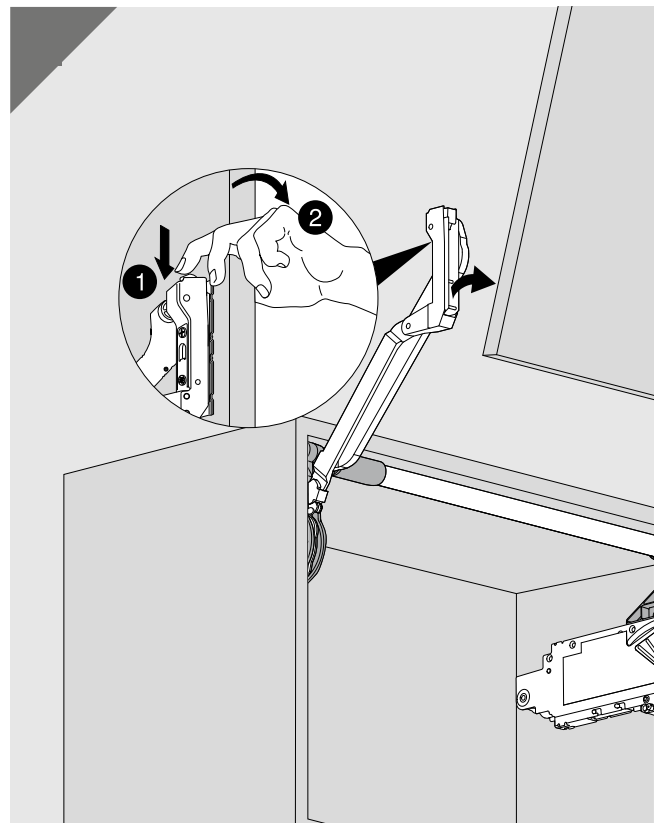
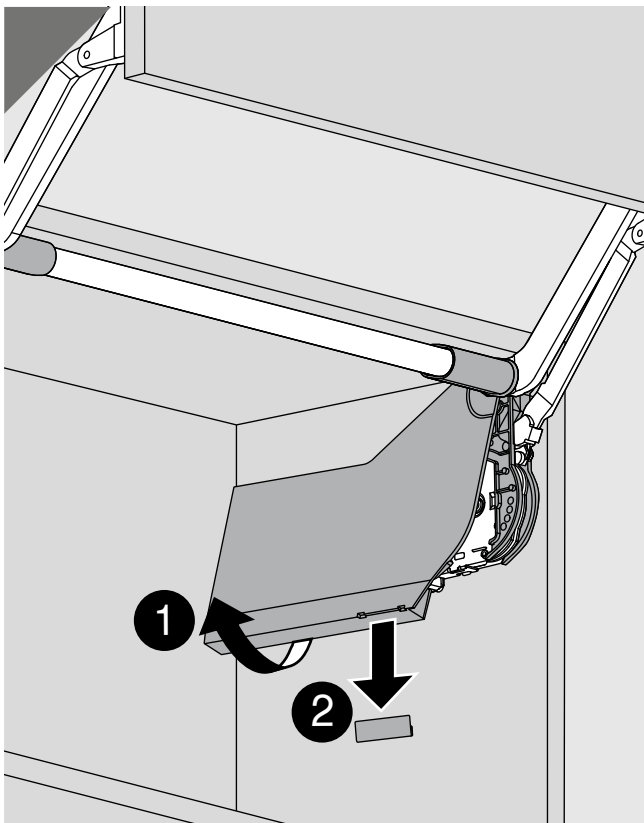


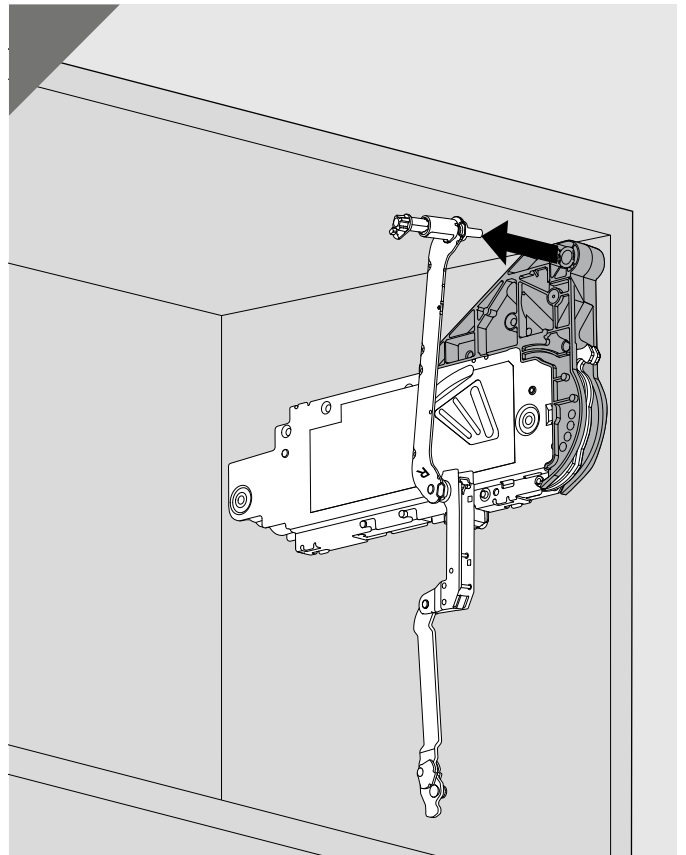
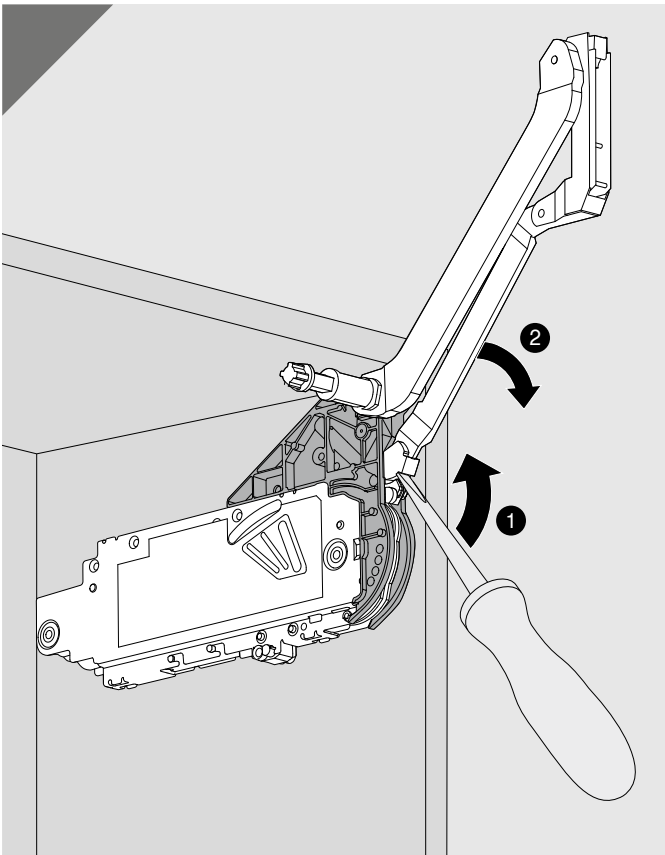
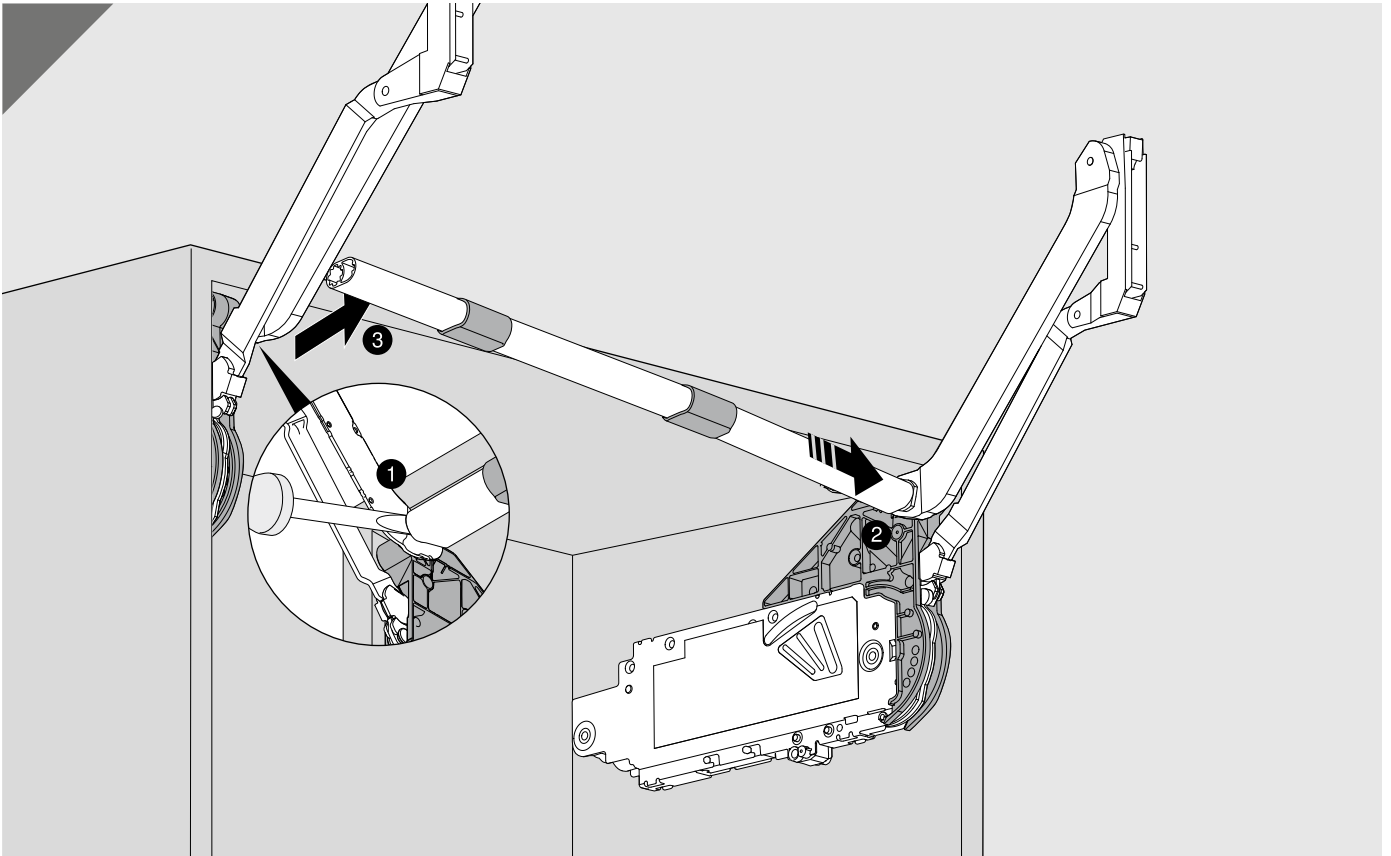
| RÉGLAGES LIFT



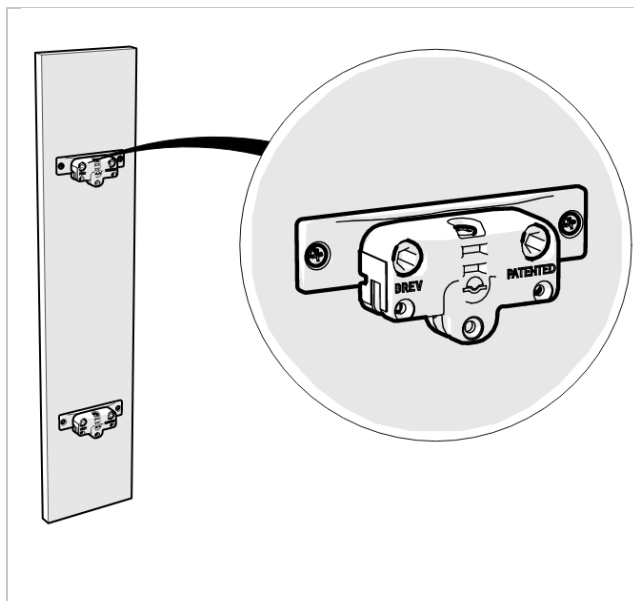


| DÉMONTAGE LIFT

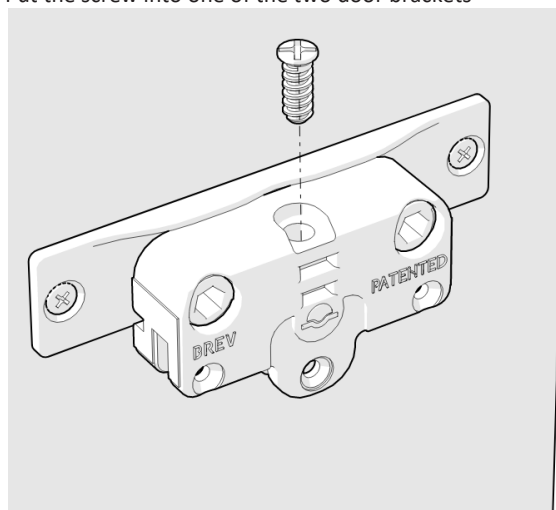




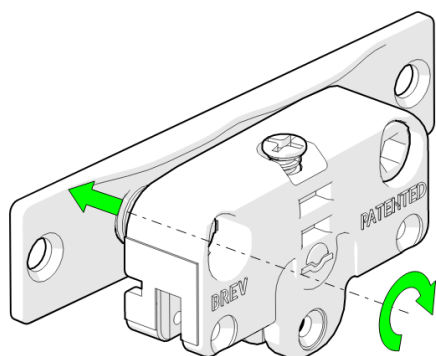
| RÉGLAGES



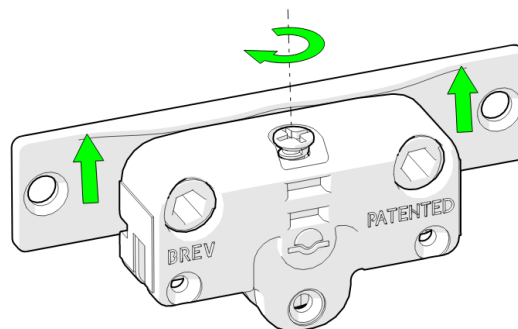
Inserire la vite di regolazione verticale su uno dei due frontalini
| Put the screw into one of the two door brackets



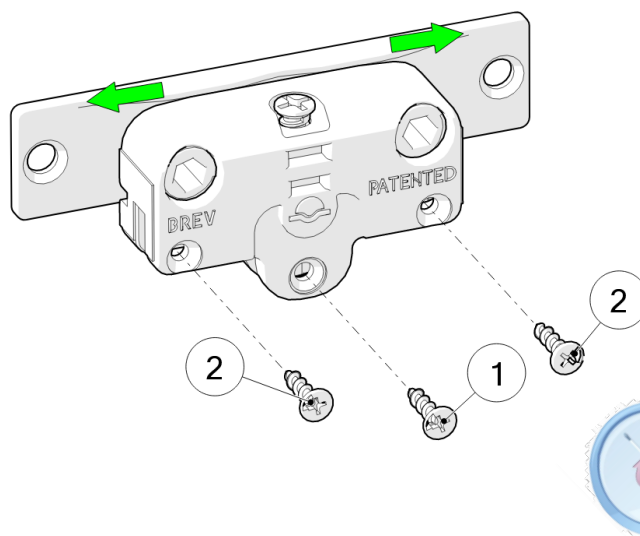
Regolazione frontale | *Front adjustment*



Regolazione in altezza | *Vertical adjustment*



Regolazione laterale | *Side adjustment*



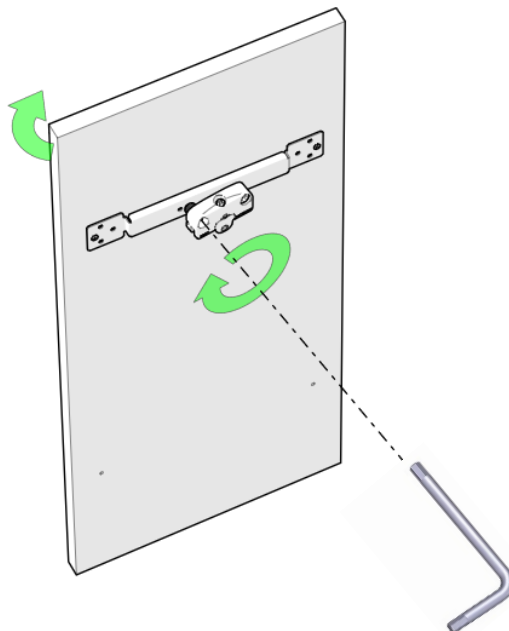
A fine regolazione bloccare con **1 e/o 2** | *After adjustment block using 1 and/or 2*

1: bloccaggio adatto con regolazione in altezza oltre 2 mm | *block useful with vertical adjustment over 2 mm*

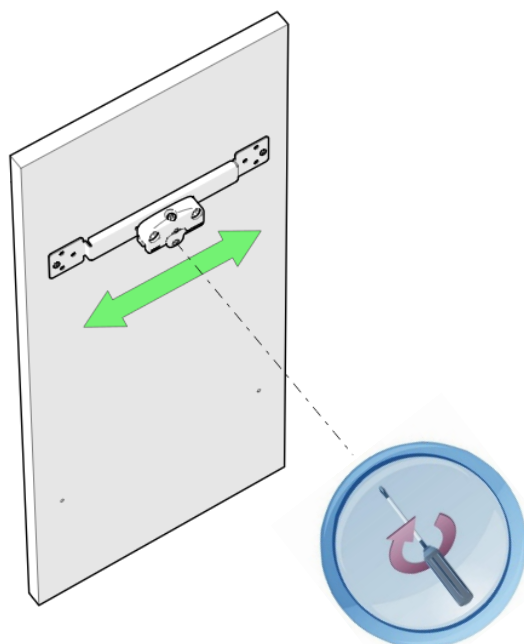
2: bloccaggio adatto con regolazione in altezza fino a 2 mm | *block useful with vertical adjustment under 2 mm*

| RÉGLAGES

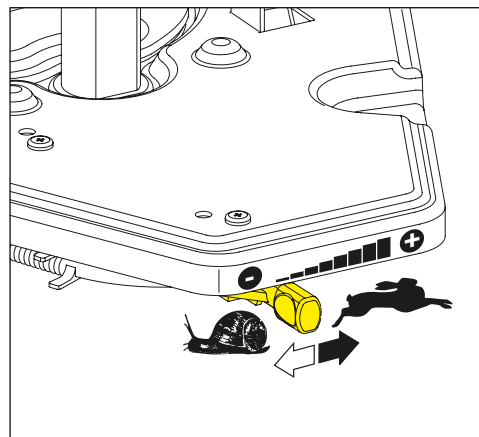
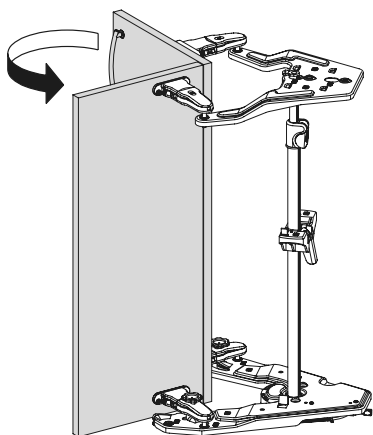
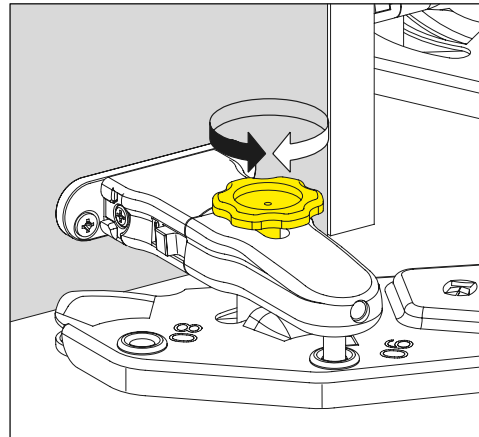
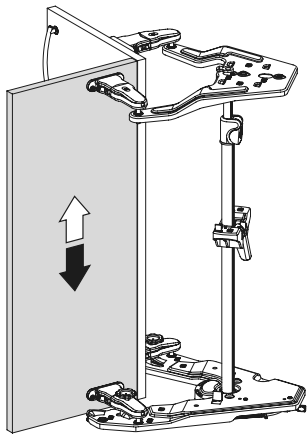
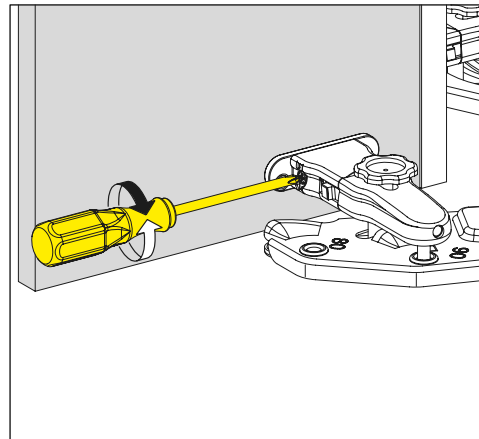
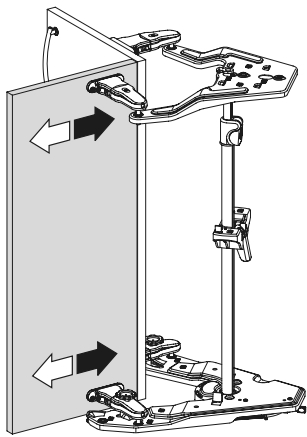
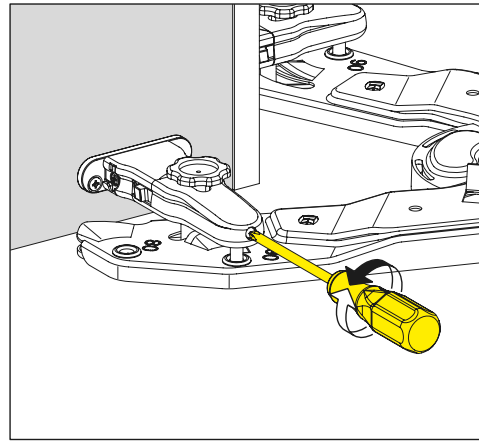
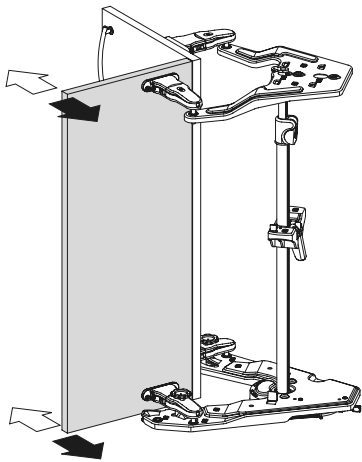
REGISTRAZIONE FRONTALE | *FRONTAL ADJUSTMENT* | Réglage frontal



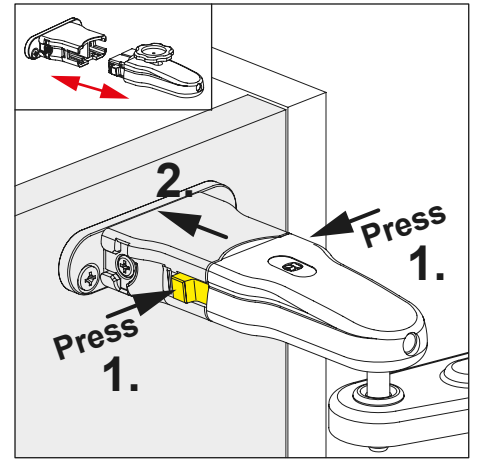
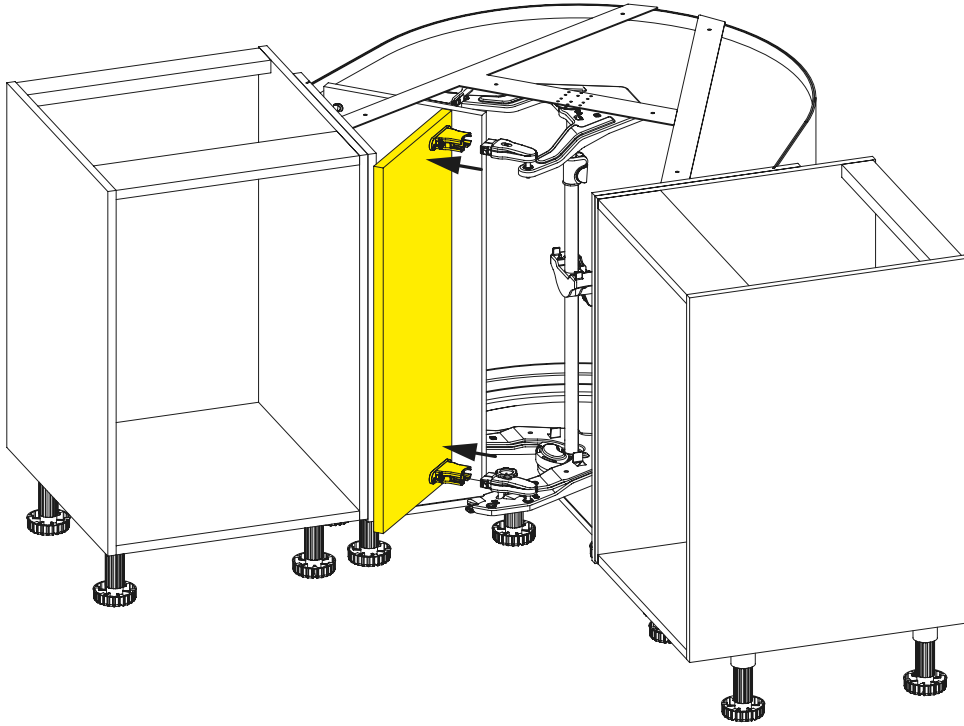
REGISTRAZIONE LATERALE (centrare l'anta e bloccare la vite) | *SIDE ADJUSTMENT* (*adjust the door and screw to block*) / Réglage lateral (centrer la porte et bloquer avec la vis)



| RÉGLAGES FAÇADE BA70/PRE90

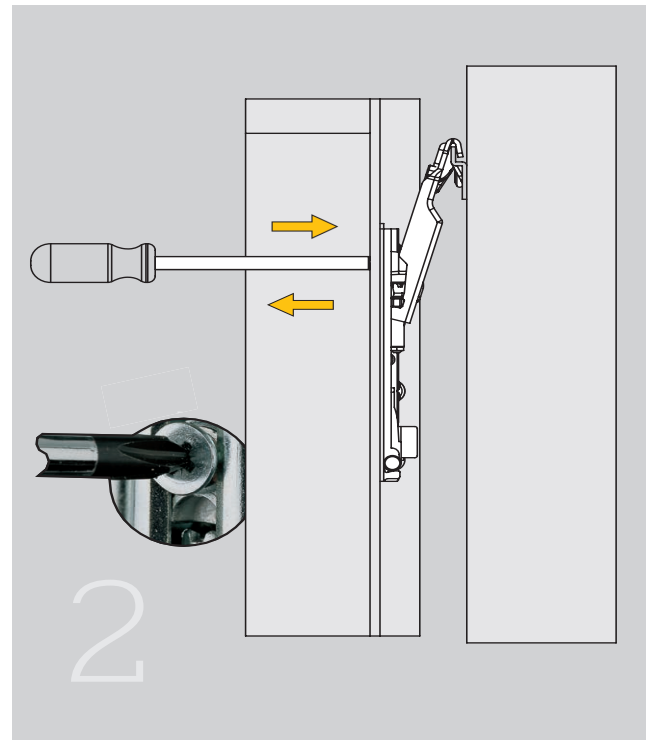
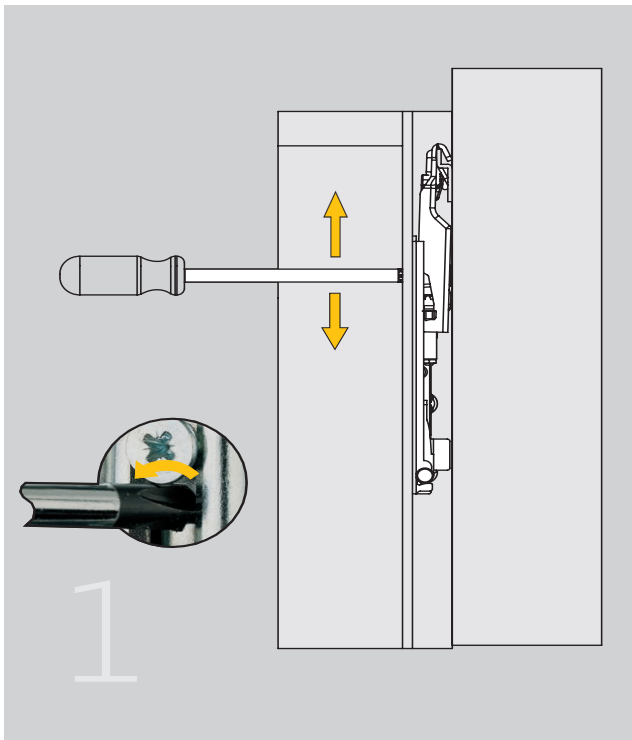


| DÉMONTAGE BA70/PRE90



SUSPENSION HAUTE : TRASER 6

| RÉGLAGES SUSPENSION



| DÉMONTAGE SUSPENSION

